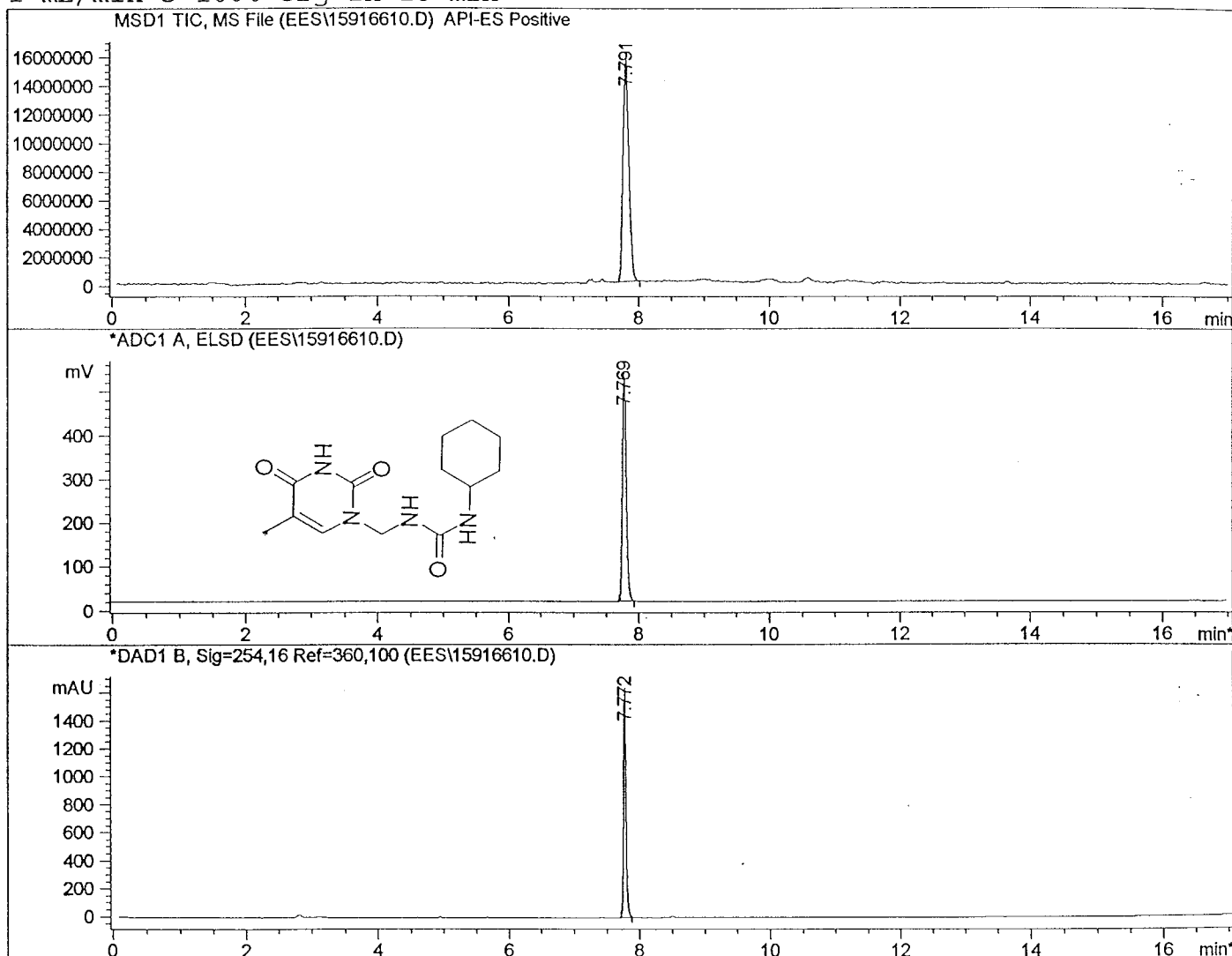


```

=====
Injection Date   : 12/08/1999 9:09:54 PM           Seq. Line :   10
Sample Name     : 1591-066-10                     Vial      :   91
Acq. Operator  : ees                               Inj       :    1
                                                    Inj Volume:  5 ul

Sequence File   : C:\HPCHEM\1\SEQUENCE\1591-066.S
Method         : C:\HPCHEM\1\METHODS\ES-LC1.M
Last changed   : 12/08/1999 9:08:33 PM by ees
                (modified after loading)
ES-pos lcms with ELSD; NH4OAc/MeCN; 110-1000 MW
1 mL/min 5-100% org in 16 min

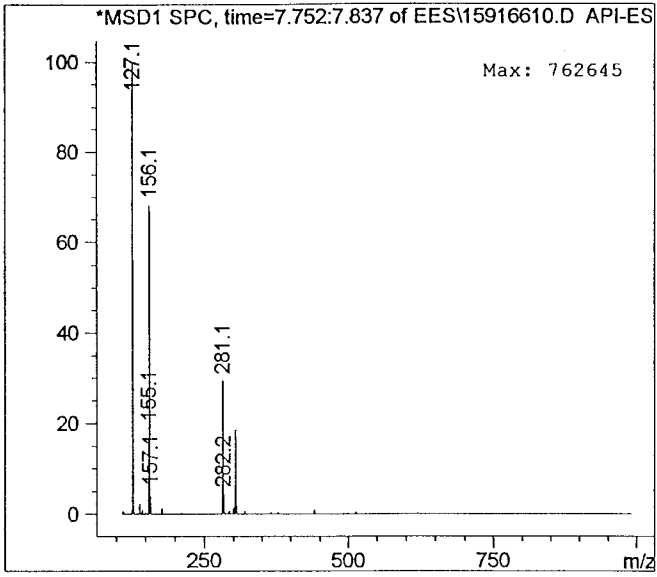
```



MS Signal: MSD1 TIC, MS File
 Spectra averaged over upper half of peaks.
 Noise Cutoff: 1000 counts.
 Reportable Ion Abundance: > 25%.
 LC Signal: ADC1 A, ELSD
 Peak matching window: 0.1 min

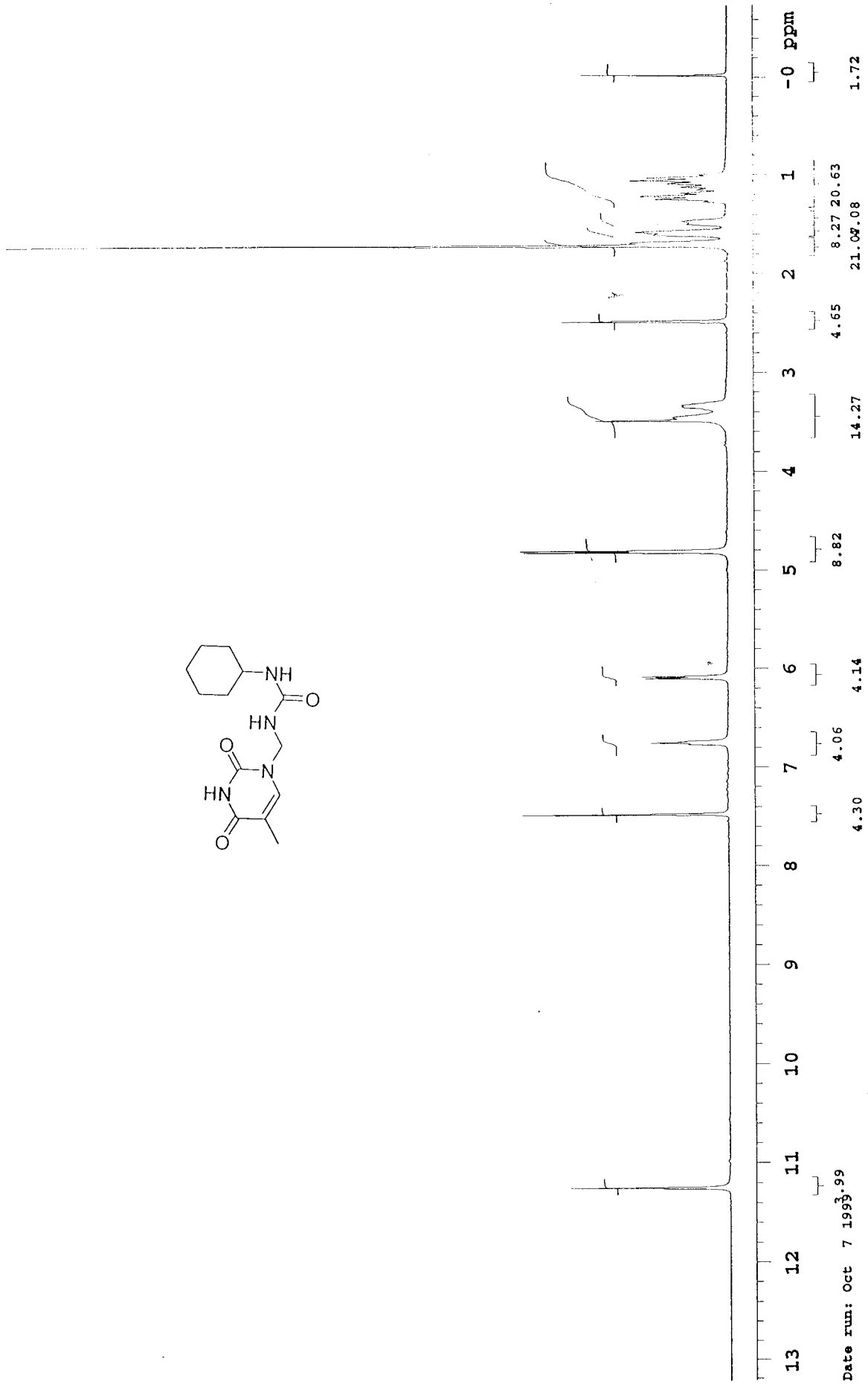
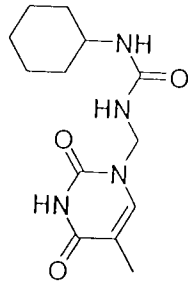
Retention Time (LC)	LC Area	Retention Time (MS)	MS Area	Mol. Weight or Ion
7.769	2074	7.791	94934248	281.14 I 156.07 I

127.09 I



*** End of Report ***

MTM1515-196-B1



Date run: Oct 7 1993.99

Spectrometer Frequency: 399.94 MHz

MTM1515-196-E1

INDEX	FREQUENCY	PEM	HEIGHT
1	498.398	11.248	28.3
2	2989.558	7.475	36.8
3	2705.729	6.765	7.1
4	2699.536	6.750	13.8
5	2692.915	6.733	7.8
6	2437.705	6.095	14.8
7	2430.016	6.076	15.4
8	1926.002	4.816	36.3
9	1919.595	4.800	36.9
10	1392.729	3.482	23.5
11	1378.633	3.447	9.8
12	1336.774	3.342	8.1
13	1332.930	3.333	7.9
14	1329.300	3.324	8.1
15	991.866	2.480	29.4
16	684.545	1.712	129.5
17	673.226	1.683	17.3
18	640.978	1.603	13.2
19	628.591	1.572	16.4
20	597.411	1.494	7.1
21	585.024	1.463	7.9
22	495.754	1.240	12.8
23	483.794	1.210	15.8
24	471.834	1.180	8.2
25	446.633	1.117	8.1
26	432.752	1.082	10.6
27	419.938	1.050	17.3
28	408.619	1.022	14.3
29	-9.542	-0.024	25.8

```

=====
Injection Date   : 12/08/1999 10:35:48 PM      Seq. Line :   14
Sample Name     : 1591-066-14                 Vial      :   95
Acq. Operator  : ees                          Inj       :    1
                                           Inj Volume:  5 ul

```

```

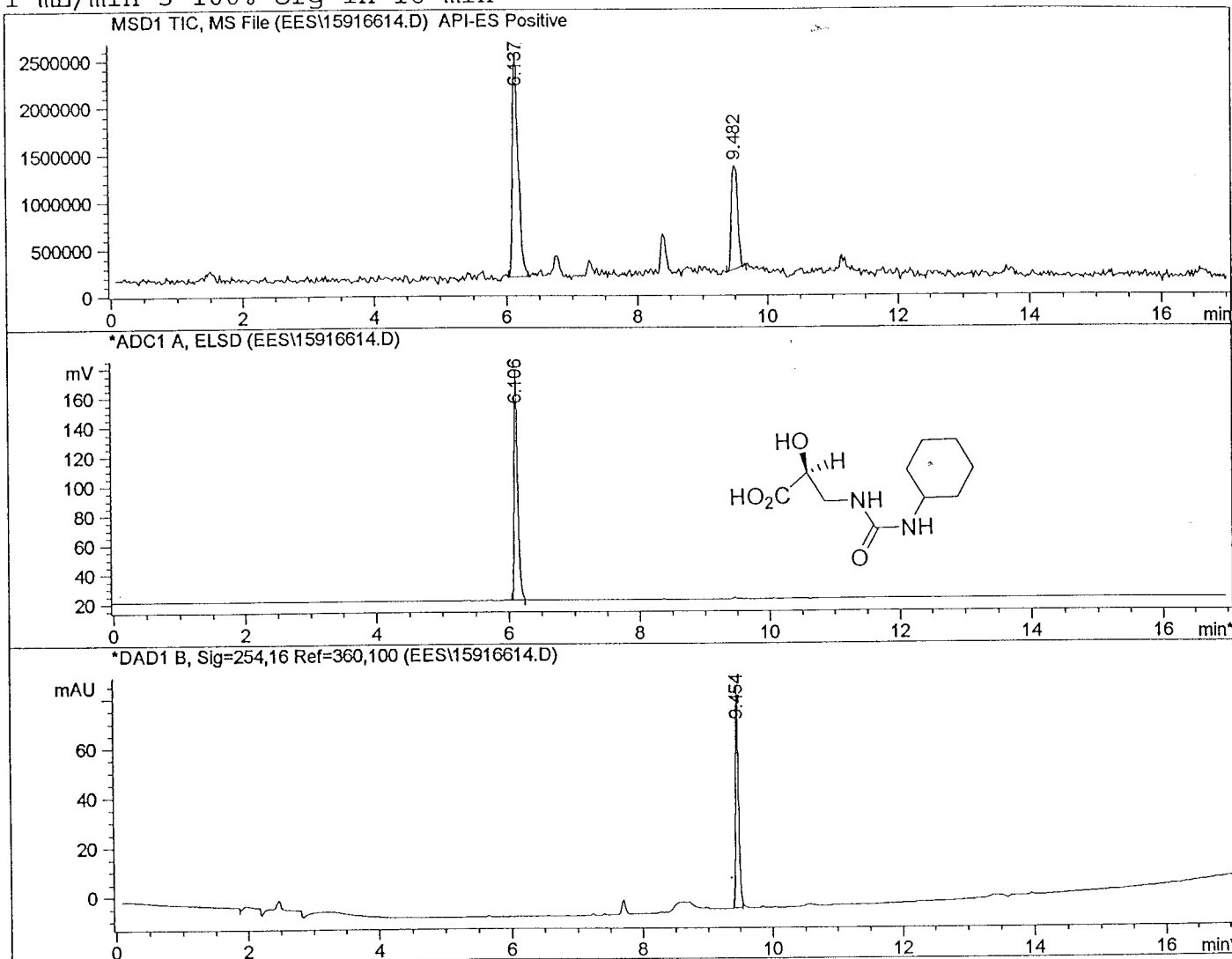
Sequence File   : C:\HPCHEM\1\SEQUENCE\1591-066.S
Method         : C:\HPCHEM\1\METHODS\ES-LC1.M
Last changed   : 12/08/1999 10:34:01 PM by ees
                (modified after loading)

```

```

ES-pos lcms with ELSD; NH4OAc/MeCN; 110-1000 MW
1 mL/min 5-100% org in 16 min

```



```

MS Signal: MSD1 TIC, MS File
Spectra averaged over upper half of peaks.
Noise Cutoff: 1000 counts.
Reportable Ion Abundance: > 25%.
LC Signal: ADC1 A, ELSD
Peak matching window: 0.1 min

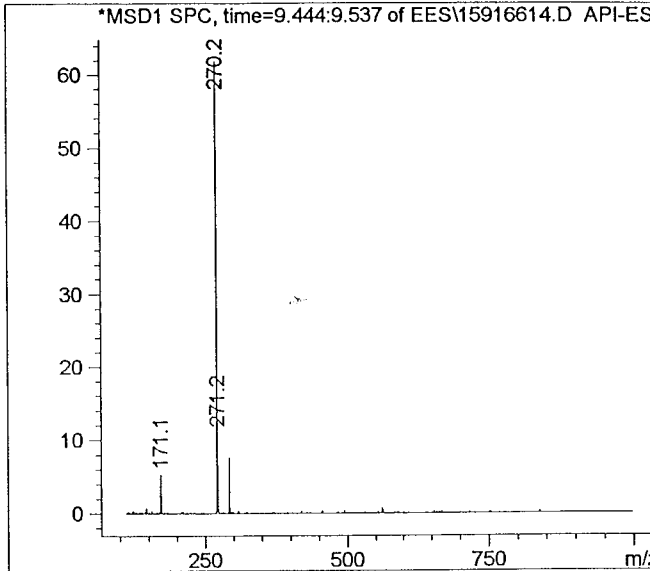
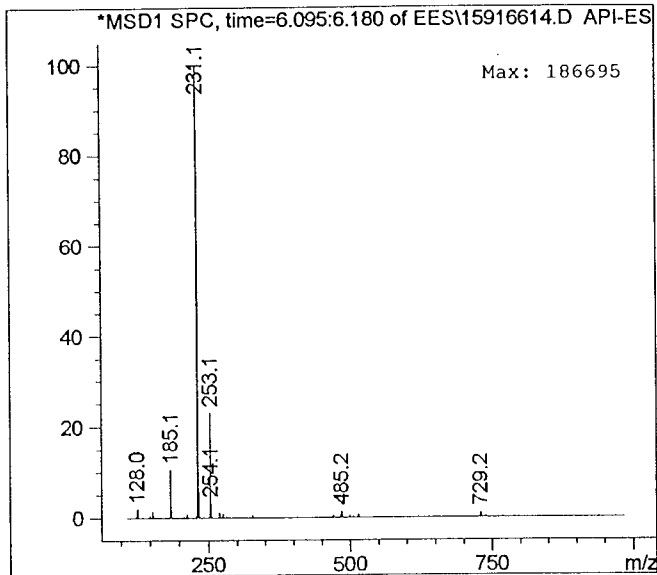
```

Retention Time (LC)	LC Area	Retention Time (MS)	MS Area	Mol. Weight or Ion
6.106	585	6.137	14808705	231.10 I

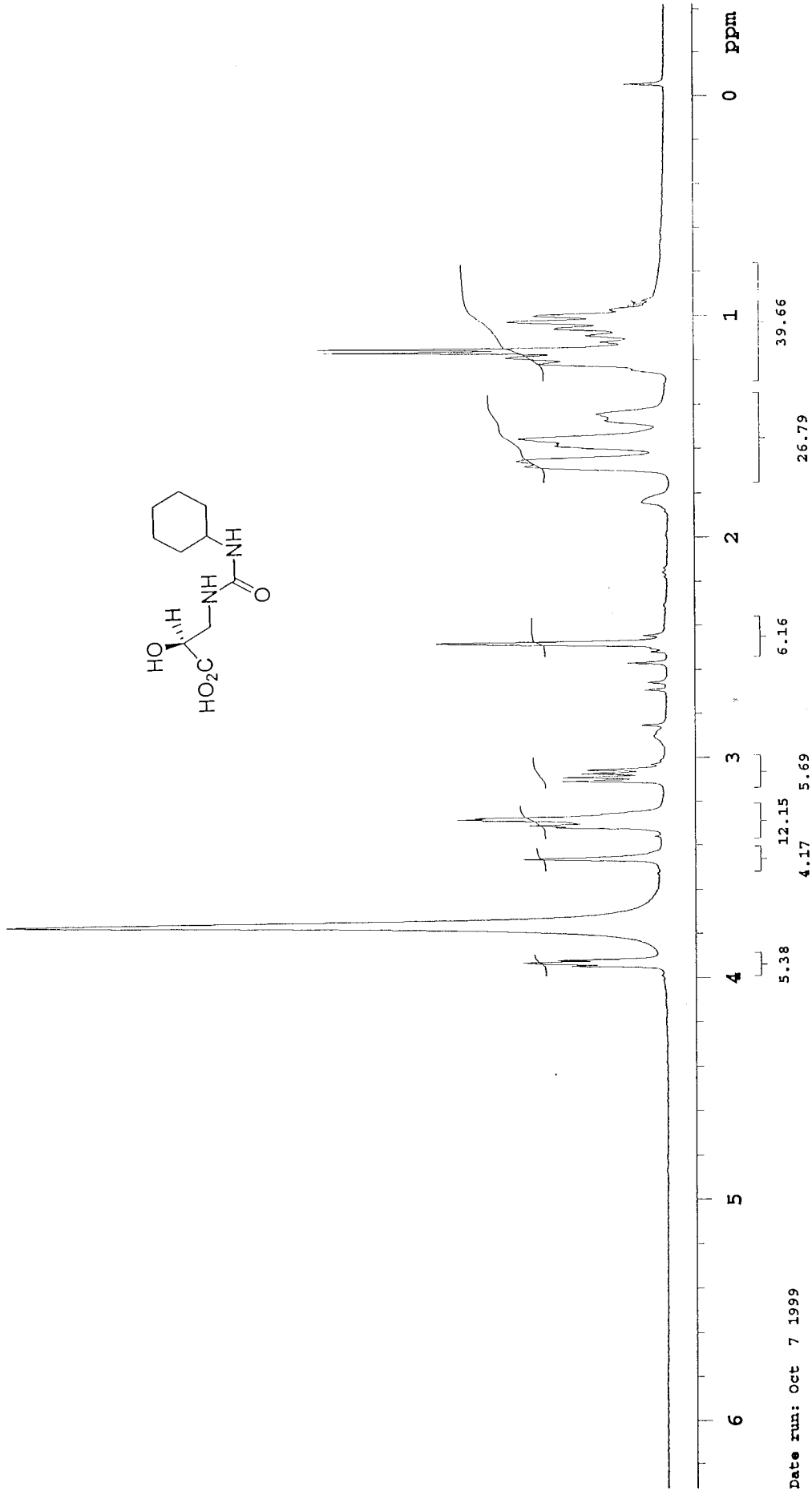
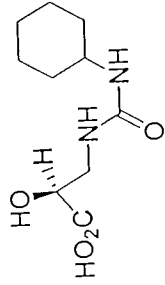
9.482

7408529

270.19 I



*** End of Report ***



Date run: Oct 7 1999

Spectrometer Frequency: 399.94 MHz

MTW1515-196-B9-D20

INDEX	FREQUENCY	PPM	HEIGHT
1	1577.249	3.944	15.7
2	1571.056	3.928	23.8
3	1566.571	3.917	18.0
4	1503.783	3.760	109.9
5	1383.545	3.459	23.7
6	1326.310	3.316	18.4
7	1322.466	3.307	22.7
8	1312.428	3.282	34.8
9	1309.438	3.274	31.8
10	1242.165	3.106	17.2
11	1235.544	3.089	17.1
12	1228.710	3.072	14.0
13	1221.663	3.055	13.1
14	1027.318	2.569	6.3
15	992.080	2.481	38.0
16	670.237	1.676	23.3
17	661.267	1.653	24.6
18	633.290	1.583	18.2
19	629.659	1.574	17.9
20	620.903	1.552	24.4
21	588.441	1.471	10.0
22	576.268	1.441	11.4
23	485.716	1.214	21.2
24	474.183	1.186	26.4
25	465.427	1.164	56.5
26	459.234	1.148	57.5
27	446.206	1.116	10.8
28	434.247	1.086	13.1
29	422.073	1.055	18.3
30	409.259	1.023	26.1
31	398.154	0.996	21.7
32	388.117	0.970	9.1
33	-21.289	-0.053	6.6

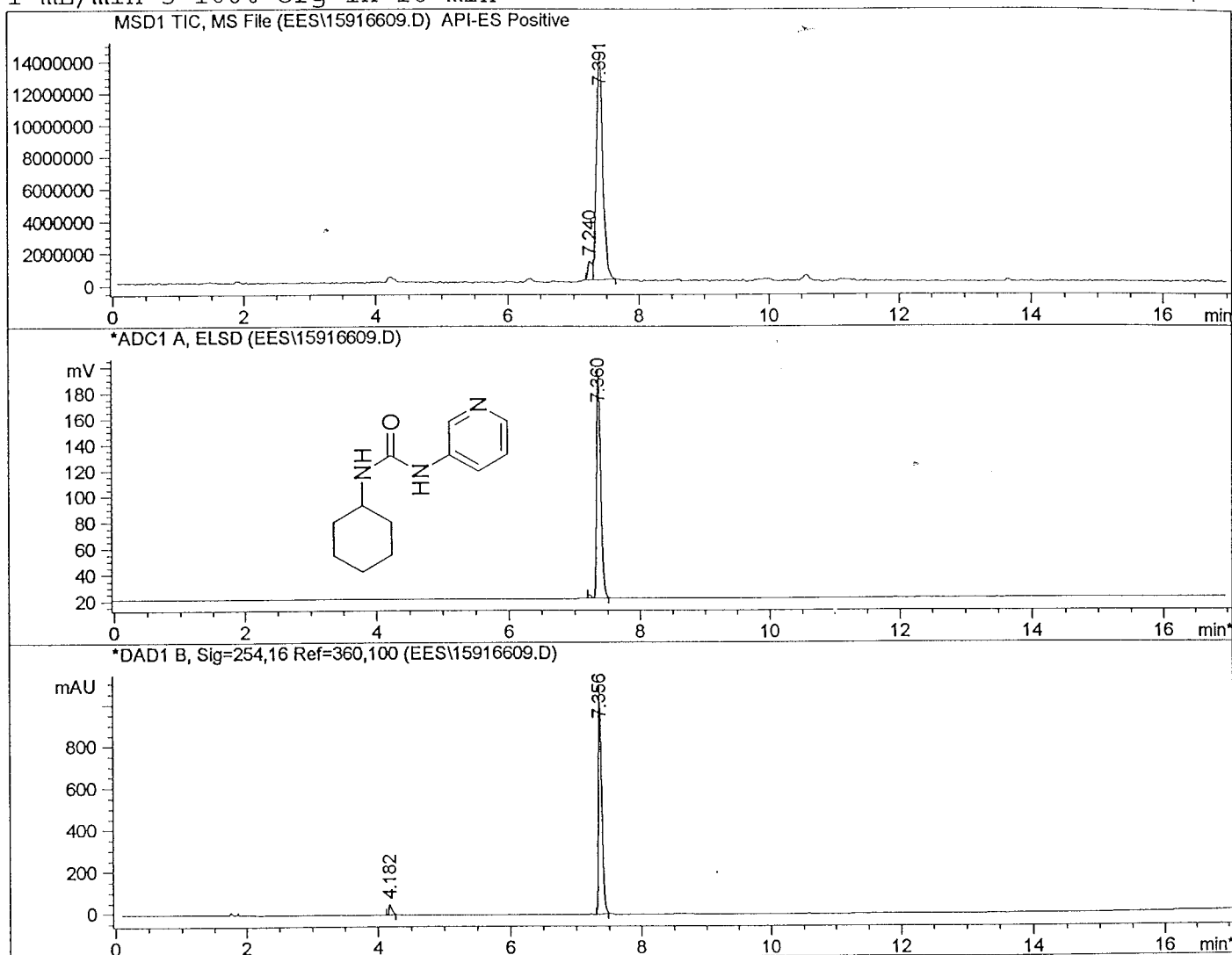

```

=====
Injection Date   : 12/08/1999 8:48:55 PM           Seq. Line :    9
Sample Name     : 1591-066-9                       Vial      :   90
Acq. Operator  : ees                               Inj       :    1
                                                    Inj Volume:  5 ul

Sequence File   : C:\HPCHEM\1\SEQUENCE\1591-066.S
Method         : C:\HPCHEM\1\METHODS\ES-LC1.M
Last changed   : 12/08/1999 8:47:10 PM by ees
                (modified after loading)

ES-pos lcms with ELSD; NH4OAc/MeCN; 110-1000 MW
1 mL/min 5-100% org in 16 min

```



MS Signal: MSD1 TIC, MS File
 Spectra averaged over upper half of peaks.
 Noise Cutoff: 1000 counts.
 Reportable Ion Abundance: > 25%.
 LC Signal: ADC1 A, ELSD
 Peak matching window: 0.1 min

Retention Time (LC)	LC Area	Retention Time (MS)	MS Area	Mol. Weight or Ion
-	-	7.240	5316808	251.01 I

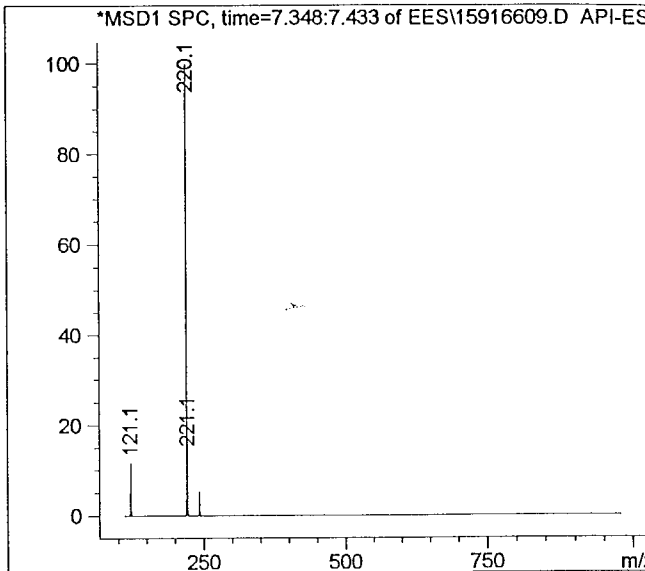
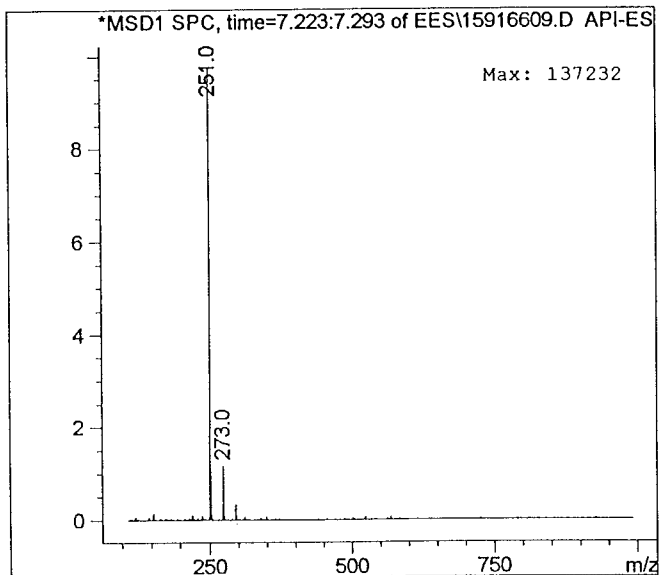
7.360

756

7.391

93366008

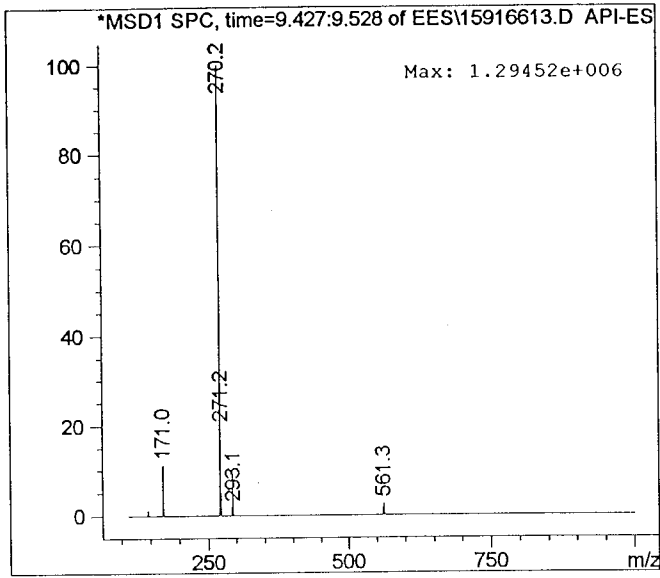
220.12 I



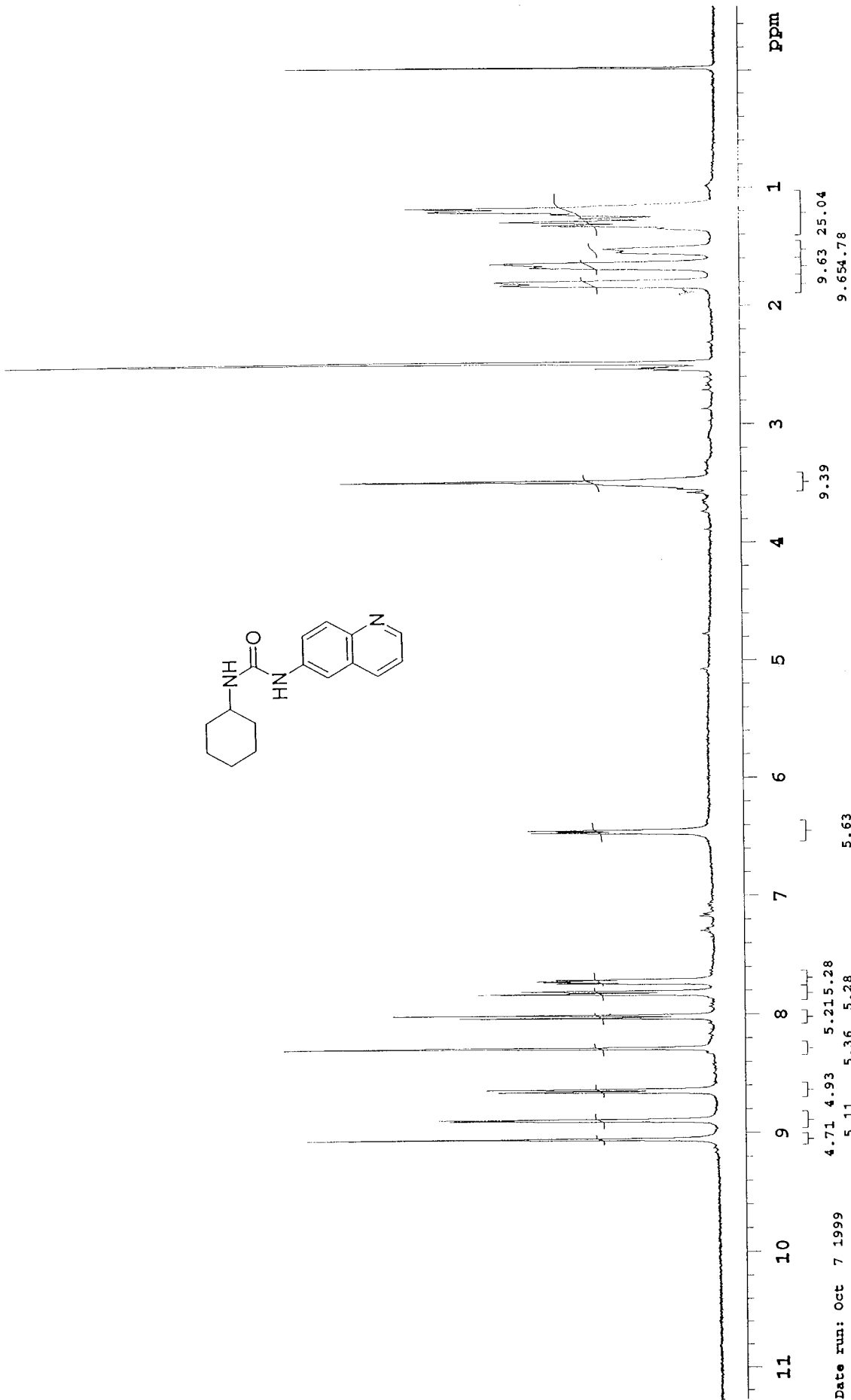
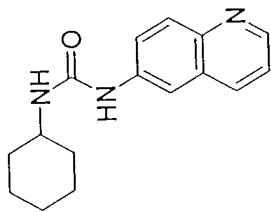
*** End of Report ***

MTM1515-196-A10

INDEX	FREQUENCY	PPM	HEIGHT
1	3790.642	9.478	96.3
2	3580.066	8.952	109.0
3	3336.175	8.342	70.5
4	3331.476	8.330	73.8
5	3265.912	8.166	57.6
6	3257.583	8.145	62.2
7	3098.476	7.747	41.9
8	3091.001	7.729	52.2
9	3085.022	7.714	36.7
10	2915.451	7.290	9.3
11	2907.549	7.270	20.5
12	2900.287	7.252	15.2
13	2862.486	7.157	22.8
14	2853.944	7.136	17.7
15	2822.336	7.057	7.2
16	2815.288	7.039	11.0
17	2742.249	6.857	52.0
18	2734.988	6.839	51.9
19	1390.807	3.478	95.0
20	1227.429	3.069	10.7
21	990.371	2.476	114.5
22	714.445	1.786	61.8
23	703.339	1.759	63.7
24	663.830	1.660	52.9
25	651.443	1.629	65.1
26	612.147	1.531	27.4
27	600.401	1.501	31.1
28	526.934	1.318	14.7
29	515.188	1.288	46.5
30	503.442	1.259	60.7
31	491.269	1.228	41.1
32	484.007	1.210	42.7
33	473.329	1.184	106.4
34	460.302	1.151	98.9
35	451.545	1.129	49.0
36	255.919	0.640	8.2
37	-11.678	-0.029	44.3



*** End of Report ***



Date run: Oct 7 1999

Spectrometer Frequency: 399.94 MHz

INDEX	FREQUENCY PPM	HEIGHT
1	3619.576	9.050
2	3557.642	8.895
3	3553.157	8.884
4	3460.043	8.651
5	3451.714	8.631
6	3312.042	8.281
7	3209.957	8.026
8	3200.774	8.003
9	3129.016	7.824
10	3119.833	7.801
11	3093.351	7.735
12	3088.652	7.723
13	3085.235	7.714
14	3080.323	7.702
15	2583.783	6.460
16	2576.095	6.441
17	1416.862	3.543
18	1392.515	3.482
19	1016.853	2.543
20	1011.087	2.528
21	1005.748	2.515
22	992.080	2.481
23	728.540	1.822
24	718.502	1.797
25	668.528	1.672
26	656.141	1.641
27	617.913	1.545
28	605.953	1.515
29	537.612	1.344
30	526.080	1.315
31	514.120	1.286
32	502.160	1.256
33	488.279	1.221
34	478.882	1.197
35	468.844	1.172
36	-9.756	-0.024
		74.7

MS Signal: MSD1 TIC, MS File

Spectra averaged over upper half of peaks.

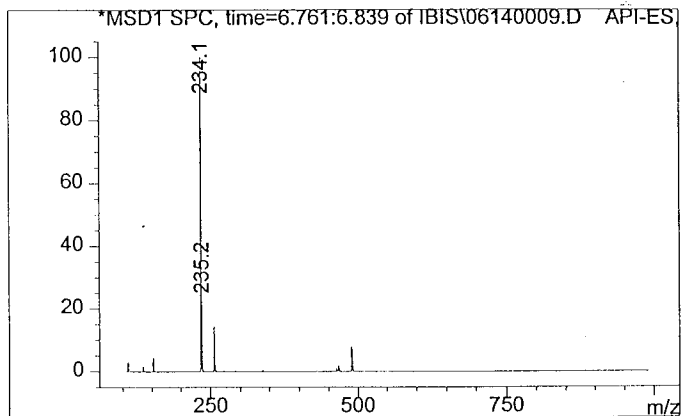
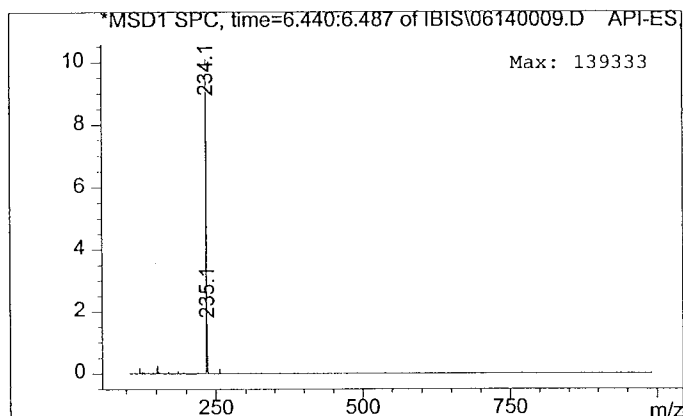
Noise Cutoff: 1000 counts.

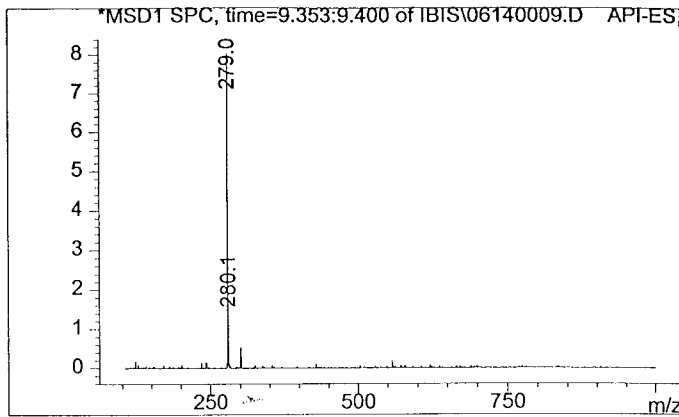
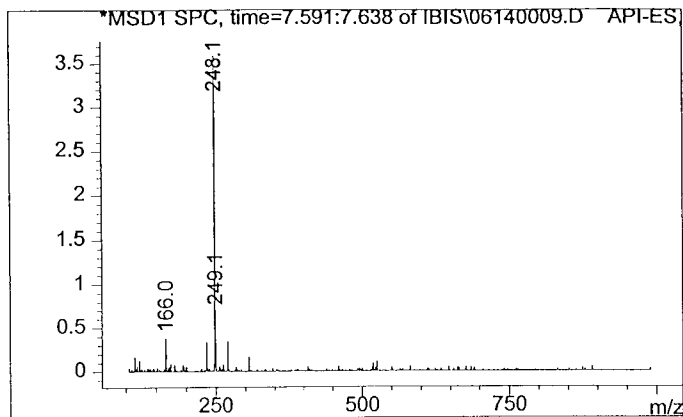
Reportable Ion Abundance: > 10%.

LC Signal: ADC1 A, ELSD

Peak matching window: 0.1 min

Retention Time (LC)	LC Area	Retention Time (MS)	MS Area	Mol. Weight or Ion
-	-	6.460	4779059	235.12 I 234.11 I
6.796	3955	6.798	102673416	256.10 I 235.15 I 234.13 I
-	-	7.610	2022170	249.11 I 248.09 I 166.03 I
-	-	9.377	3954124	280.09 I 279.02 I
15.746	53	-	-	
15.873	101	-	-	
16.029	70	-	-	
16.158	96	-	-	
16.195	53	-	-	
16.267	93	-	-	

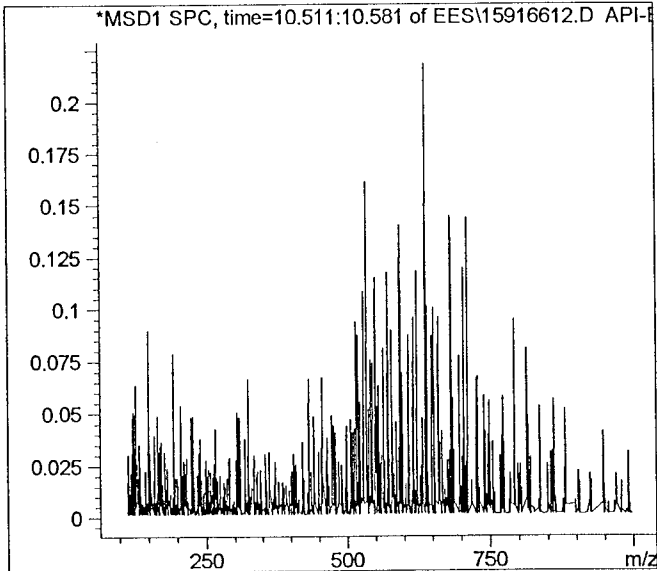
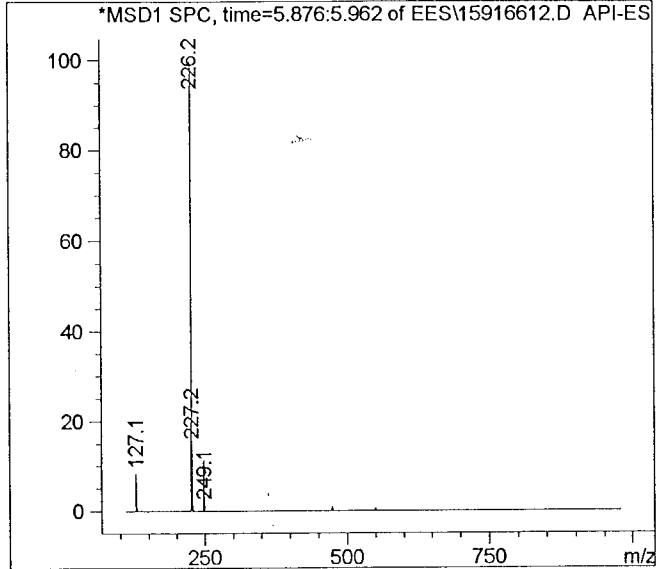
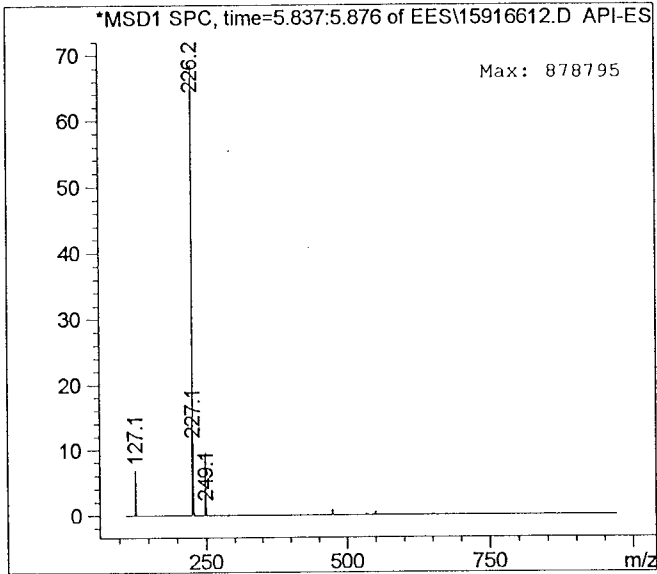




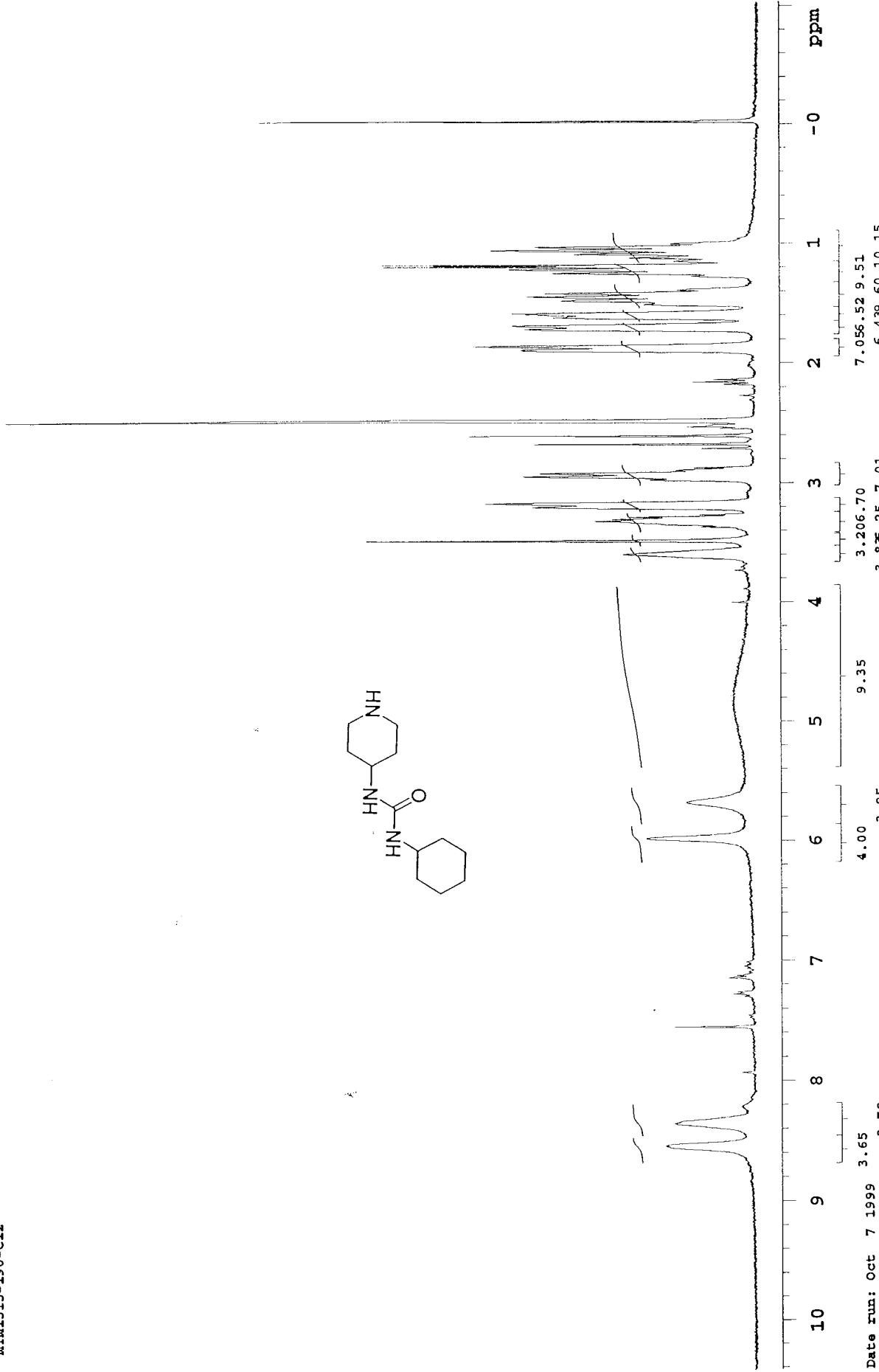
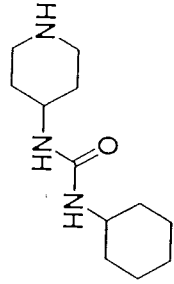
*** End of Report ***

INDEX	FREQUENCY	PPM	HEIGHT	INDEX	FREQUENCY	PPM	HEIGHT
1	1587.010	7.936	49.8	44	243.219	1.216	44.0
2	1366.984	6.836	27.7	45	236.090	1.181	23.1
3	1358.976	6.796	61.5	46	226.227	1.131	24.1
4	1351.066	6.756	38.7	47	214.215	1.071	16.9
5	1328.604	6.644	28.7	48	203.472	1.017	6.6
6	1326.553	6.634	58.4	49	191.753	0.959	4.7
7	1324.502	6.623	34.5	50	186.479	0.933	3.9
8	1296.962	6.486	28.2	51	167.143	0.836	3.9
9	1294.912	6.475	23.1				
10	1289.052	6.446	20.6				
11	1287.978	6.441	19.6				
12	1219.909	6.100	24.7				
13	1218.737	6.094	21.8				
14	1217.761	6.090	22.3				
15	1212.097	6.061	20.1				
16	1210.827	6.055	21.5				
17	1187.389	5.938	23.4				
18	1179.576	5.899	24.4				
19	976.836	4.885	52.8				
20	906.912	4.535	5.4				
21	901.638	4.509	3.6				
22	696.163	3.481	10.7				
23	691.085	3.456	8.8				
24	683.760	3.419	12.5				
25	679.463	3.398	13.7				
26	668.428	3.343	5.0				
27	660.224	3.302	659.1				
28	648.798	3.244	3.5				
29	500.063	2.501	35.4				
30	498.403	2.492	81.2				
31	496.450	2.483	115.9				
32	494.692	2.474	84.1				
33	492.739	2.464	39.2				
34	357.578	1.788	18.1				
35	353.574	1.768	16.3				
36	345.469	1.728	19.3				
37	323.398	1.617	21.4				
38	319.687	1.599	22.0				
39	307.284	1.537	12.2				
40	297.616	1.488	10.9				
41	273.689	1.369	6.8				
42	262.654	1.313	16.2				
43	251.813	1.259	22.8				

Retention Time (LC)	LC Area	Retention Time (MS)	MS Area	Mol. Weight or Ion
5.870	1457	5.864	23543846	226.15 I
-	-	5.914	74710056	226.15 I
-	-	10.549	3487341	



*** End of Report ***



10 9 8 7 6 5 4 3 2 1 -0 PPM

9.35
7.056 5.52 3.79
6.439 3.65
4.00 3.95
3.85 3.206
3.79

Date run: Oct 7 1999

Spectrometer Frequency: 399.94 MHz

INDEX	FREQUENCY	PPM	HEIGHT	INDEX	FREQUENCY	PPM	HEIGHT
1	3414.980	8.539	16.0	44	445.138	1.113	21.8
2	3340.873	8.353	14.4	45	432.538	1.082	31.7
3	3018.816	7.548	14.3	46	419.938	1.050	47.0
4	2390.079	5.976	19.2	47	408.192	1.021	38.9
5	2268.774	5.673	12.1	48	398.795	0.997	14.6
6	1436.723	3.552	23.2	49	-9.542	-0.024	88.8
7	1392.729	3.482	69.9				
8	1345.531	3.364	9.3				
9	1325.669	3.315	28.2				
10	1319.049	3.298	25.2				
11	1312.001	3.281	22.0				
12	1304.953	3.263	9.5				
13	1279.112	3.198	39.4				
14	1267.152	3.168	48.1				
15	1187.706	2.970	18.3				
16	1176.814	2.942	41.2				
17	1166.349	2.916	38.1				
18	1155.244	2.889	13.7				
19	1146.915	2.868	10.4				
20	1082.845	2.708	9.1				
21	1068.536	2.672	39.0				
22	1040.773	2.602	51.0				
23	1010.446	2.527	11.7				
24	991.653	2.480	135.4				
25	861.164	2.153	10.6				
26	853.049	2.133	7.0				
27	753.954	1.885	41.5				
28	742.422	1.856	50.1				
29	683.478	1.709	40.7				
30	672.159	1.681	43.1				
31	644.609	1.612	35.5				
32	631.795	1.580	43.2				
33	600.614	1.502	19.2				
34	588.441	1.471	34.2				
35	574.559	1.437	40.4				
36	563.454	1.409	37.1				
37	552.776	1.382	13.3				
38	507.500	1.269	10.9				
39	496.181	1.241	35.7				
40	484.007	1.210	43.6				
41	475.465	1.189	66.7				
42	469.271	1.173	66.8				
43	456.457	1.141	14.0				

```

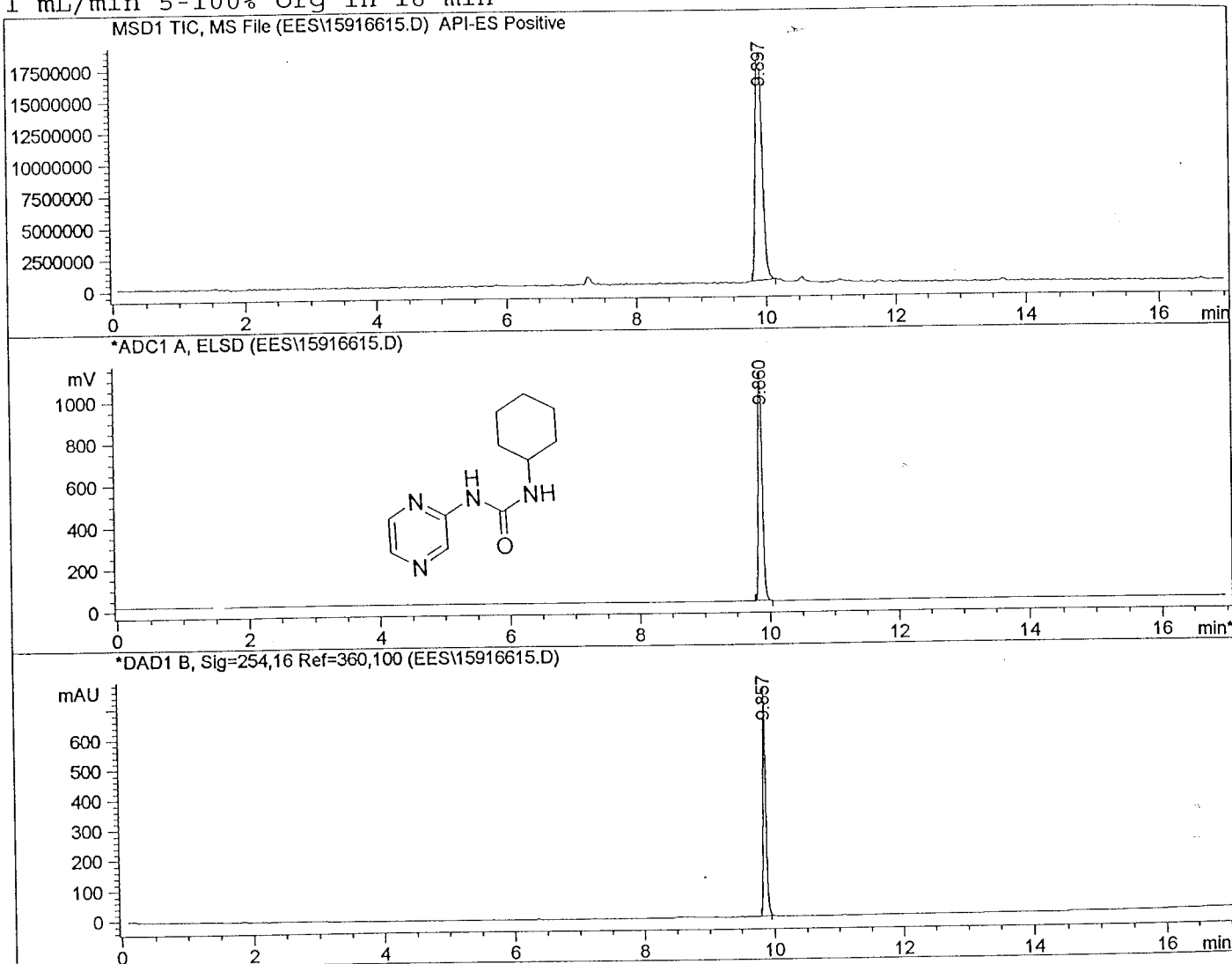
=====
Injection Date   : 12/08/1999 10:57:11 PM      Seq. Line :   15
Sample Name     : 1591-066-15                  Vial      :   96
Acq. Operator   : ees                          Inj       :    1
                                           Inj Volume:  5 ul
  
```

```

Sequence File   : C:\HPCHEM\1\SEQUENCE\1591-066.S
Method          : C:\HPCHEM\1\METHODS\ES-LC1.M
Last changed    : 12/08/1999 10:55:25 PM by ees
                  (modified after loading)
  
```

```

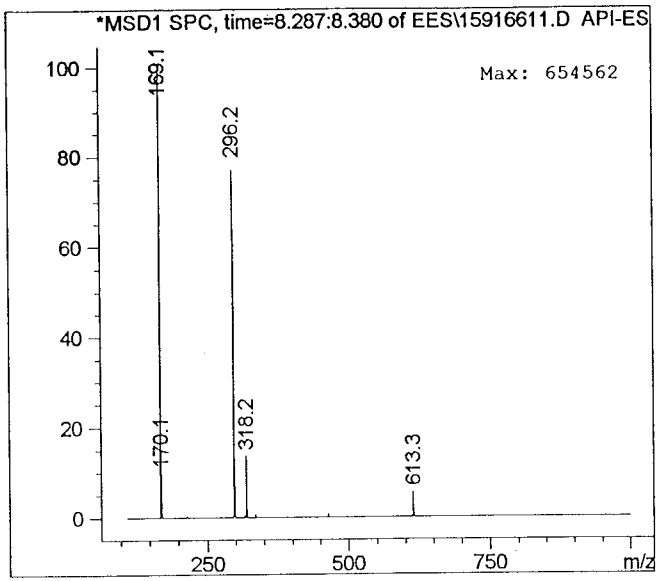
ES-pos lcms with ELSD; NH4OAc/MeCN; 110-1000 MW
1 mL/min 5-100% org in 16 min
  
```



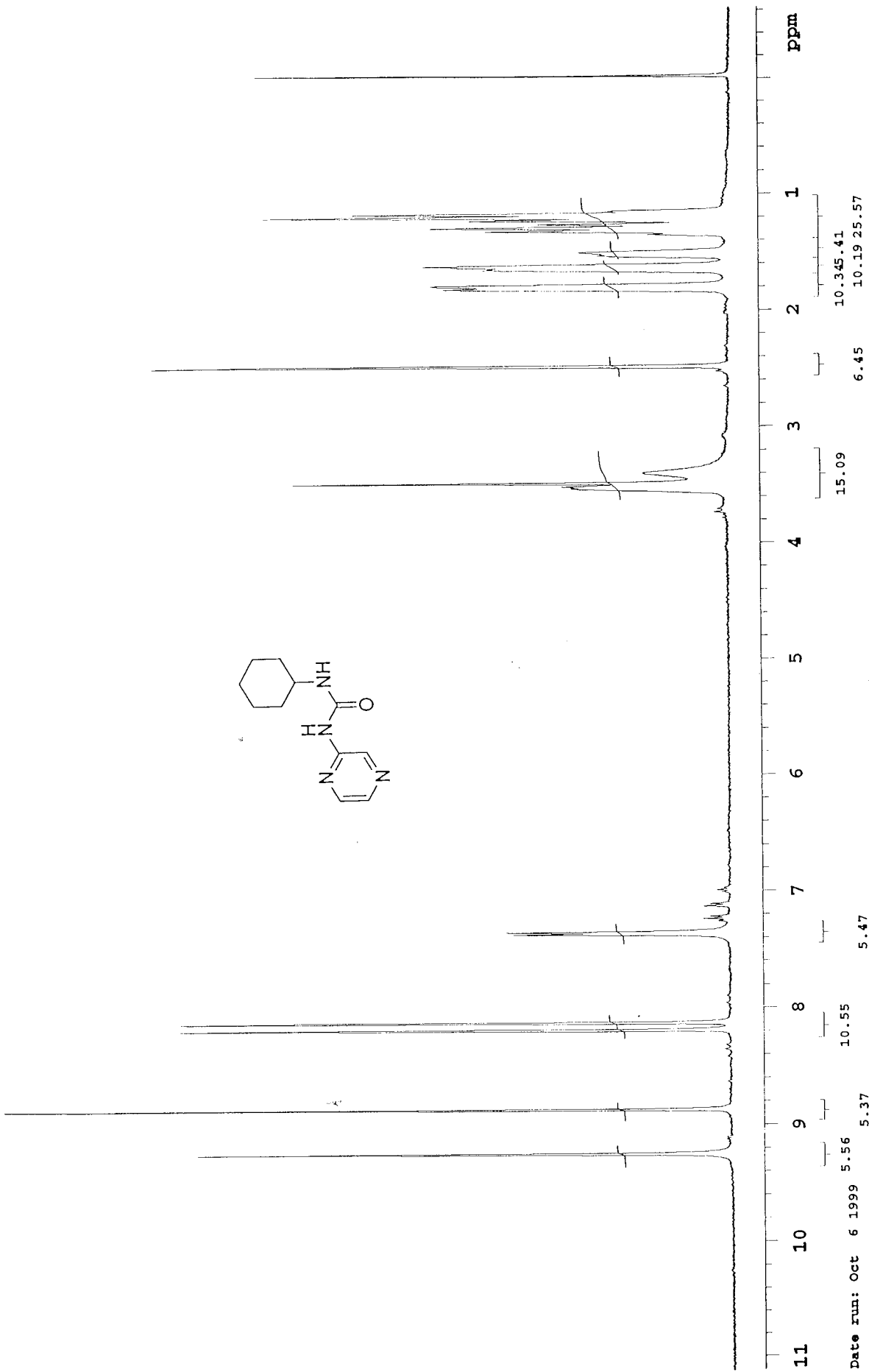
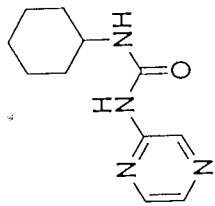
```

MS Signal: MSD1 TIC, MS File
Spectra averaged over upper half of peaks.
Noise Cutoff: 1000 counts.
Reportable Ion Abundance: > 25%.
LC Signal: ADC1 A, ELSD
Peak matching window: 0.1 min
  
```

Retention Time (LC)	LC Area	Retention Time (MS)	MS Area	Mol. Weight or Ion
9.860	4799	9.897	133372512	221.13 I



*** End of Report ***



Date run: Oct 6 1999 5.56 5.37 5.47 10.55 10.345.41 10.1925.57 6.45 15.09

Spectrometer Frequency: 399.94 MHz

MTM1515-196-C10

INDEX	FREQUENCY	PPM	HEIGHT
1	3276.590	8.193	38.0
2	2333.271	5.834	11.5
3	2327.932	5.821	12.1
4	1600.101	4.001	15.6
5	1594.548	3.987	30.0
6	1588.995	3.973	18.2
7	1392.729	3.482	18.6
8	1323.747	3.310	22.7
9	1318.835	3.298	24.6
10	991.225	2.478	41.2
11	917.332	2.294	104.1
12	665.965	1.665	11.8
13	653.578	1.634	13.1
14	639.483	1.599	10.9
15	626.242	1.566	13.6
16	584.810	1.462	6.7
17	487.638	1.219	10.0
18	475.038	1.188	45.6
19	468.417	1.171	39.0
20	437.877	1.095	7.0
21	423.996	1.060	8.7
22	410.968	1.028	14.8
23	399.435	0.999	12.7
24	-9.329	-0.023	14.3

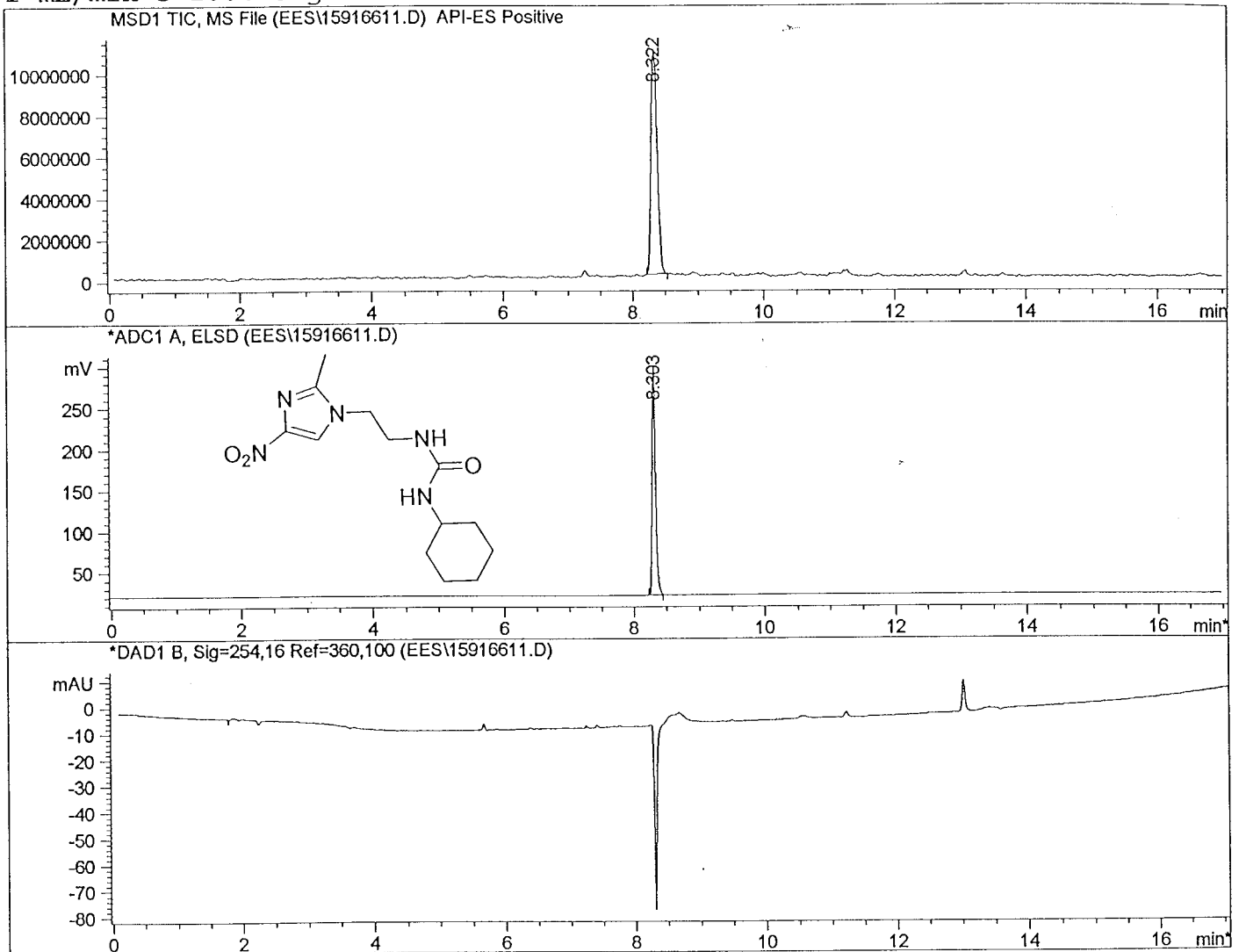
```

=====
Injection Date   : 12/08/1999 9:31:42 PM      Seq. Line :   11
Sample Name     : 1591-066-11                Vial      :   92
Acq. Operator  : ees                          Inj       :    1
                                           Inj Volume:  5 ul

Sequence File   : C:\HPCHEM\1\SEQUENCE\1591-066.S
Method          : C:\HPCHEM\1\METHODS\ES-LC1.M
Last changed    : 12/08/1999 9:29:57 PM by ees
                  (modified after loading)

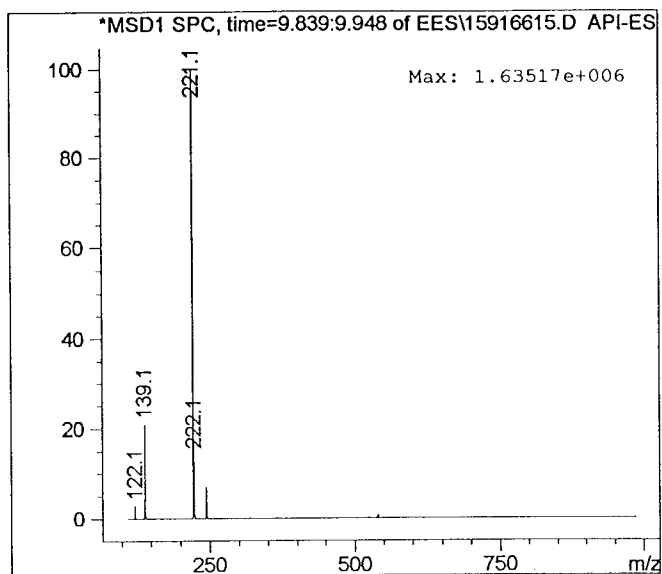
ES-pos lcms with ELSD; NH4OAc/MeCN; 110-1000 MW
1 mL/min 5-100% org in 16 min

```

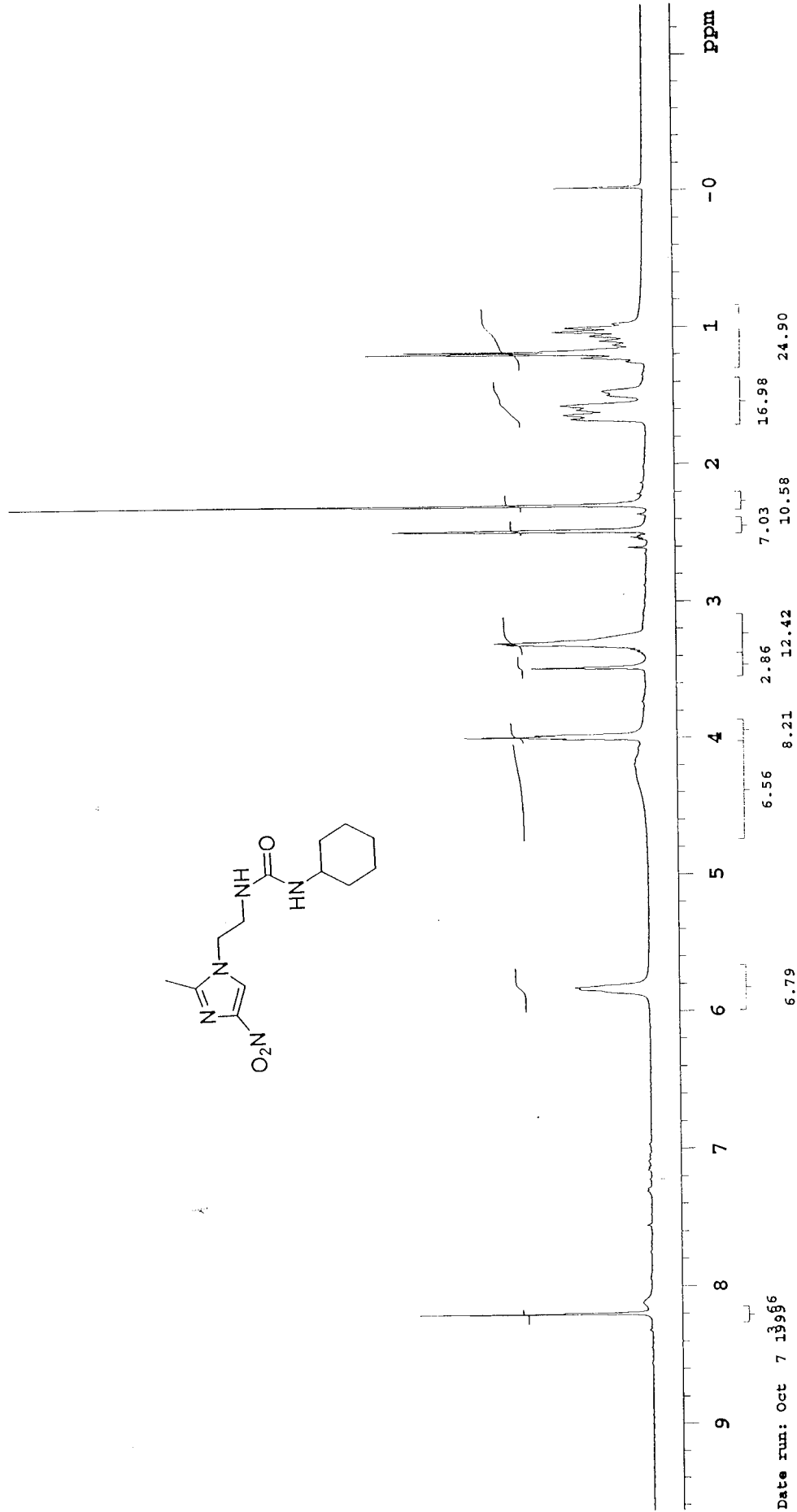
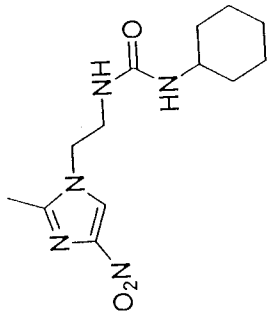


MS Signal: MSD1 TIC, MS File
 Spectra averaged over upper half of peaks.
 Noise Cutoff: 1000 counts.
 Reportable Ion Abundance: > 25%.
 LC Signal: ADC1 A, ELSD
 Peak matching window: 0.1 min

Retention Time (LC)	LC Area	Retention Time (MS)	MS Area	Mol. Weight or Ion
8.303	1012	8.322	71286704	296.19 I
				169.13 I



*** End of Report ***



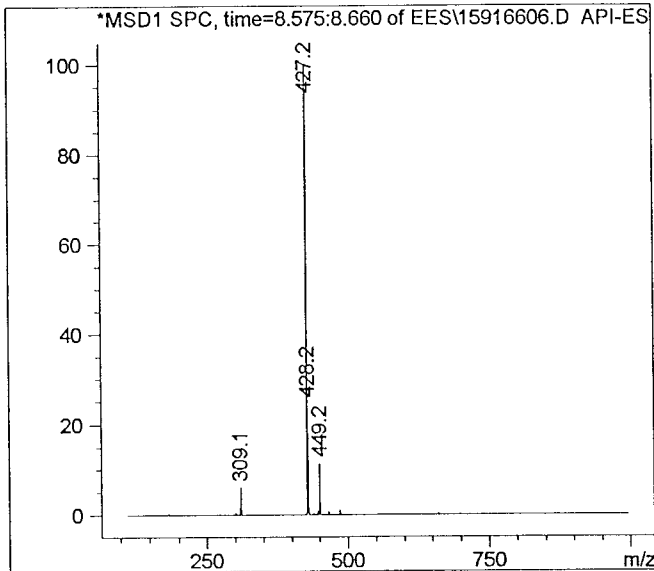
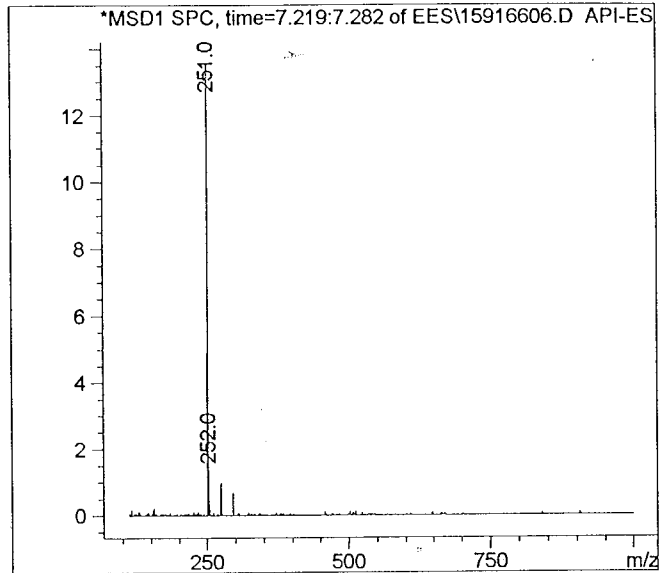
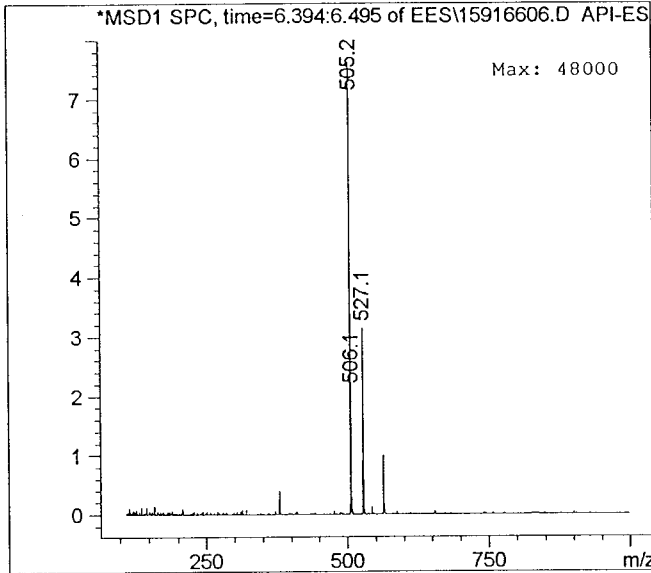
Date run: Oct 7 1995

Spectrometer Frequency: 399.94 MHz

MTW1515_296_A12

INDEX	FREQUENCY	PPM	HEIGHT
1	3698.809	9.248	98.3
2	3546.964	8.869	133.2
3	3274.668	8.188	101.0
4	3250.535	8.128	101.0
5	3248.826	8.123	98.5
6	2947.372	7.369	40.2
7	2939.797	7.351	41.5
8	1411.522	3.529	29.0
9	1404.261	3.511	30.7
10	1392.729	3.482	79.5
11	1356.422	3.392	16.0
12	992.080	2.481	105.1
13	725.123	1.813	52.0
14	713.377	1.784	54.3
15	658.918	1.648	44.8
16	655.073	1.638	44.0
17	646.104	1.616	55.6
18	610.865	1.527	24.0
19	598.692	1.497	27.5
20	537.826	1.345	14.8
21	526.721	1.317	44.3
22	514.974	1.288	54.3
23	503.015	1.258	34.7
24	489.774	1.225	47.3
25	478.862	1.197	84.4
26	467.563	1.169	68.3
27	459.234	1.148	22.8
28	-9.970	-0.025	85.6

Retention Time (LC)	LC Area	Retention Time (MS)	MS Area	Mol. Weight or Ion
-	-	6.418	3995657	527.13 I 506.13 I 505.19 I
-	-	7.247	4172384	251.00 I
8.590	1718	8.613	45413684	427.16 I



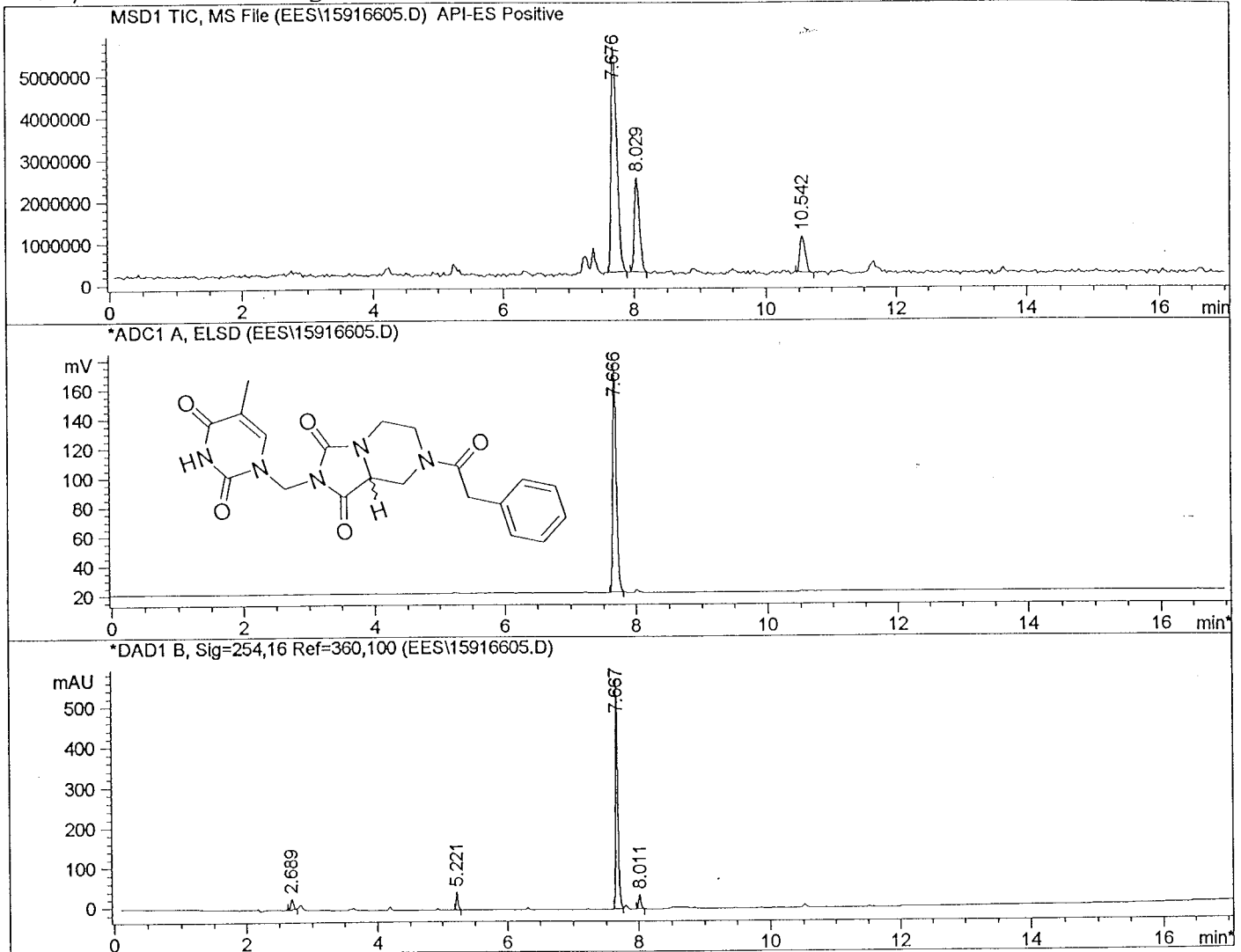
*** End of Report ***

```
=====
Injection Date   : 12/08/1999 7:23:25 PM      Seq. Line   :    5
Sample Name     : 1591-066-5                  Vial        :   86
Acq. Operator   : ees                          Inj         :    1
                                                Inj Volume  : 5 ul

Sequence File   : C:\HPCHEM\1\SEQUENCE\1591-066.S
Method          : C:\HPCHEM\1\METHODS\ES-LC1.M
Last changed    : 12/08/1999 7:21:42 PM by ees
                  (modified after loading)

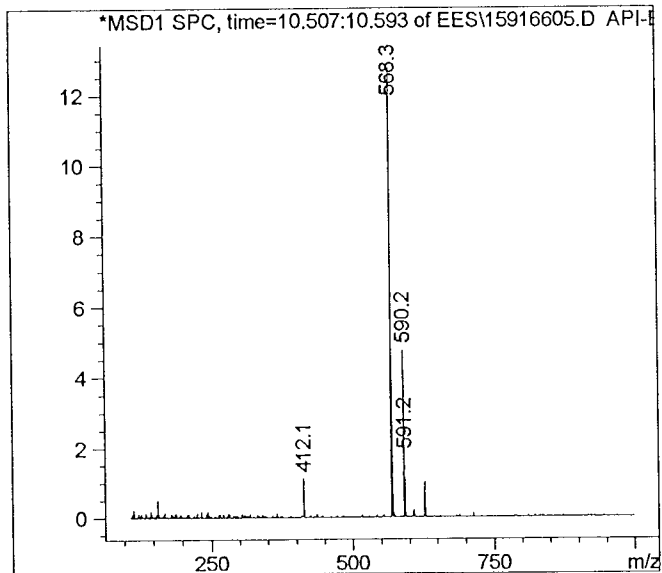
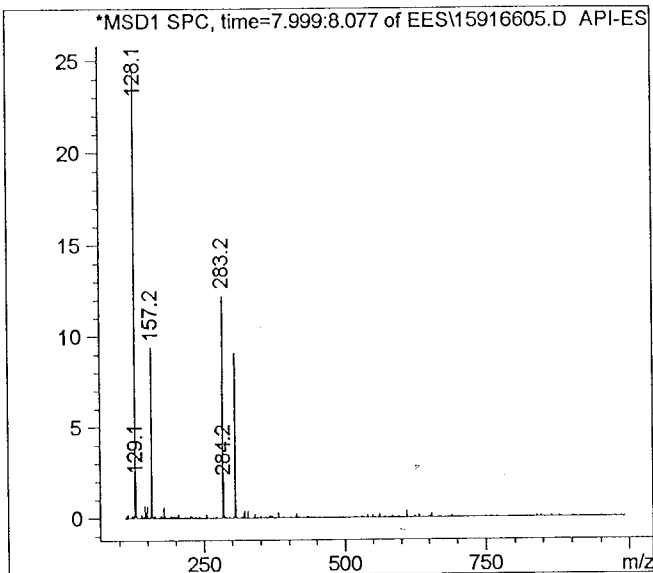
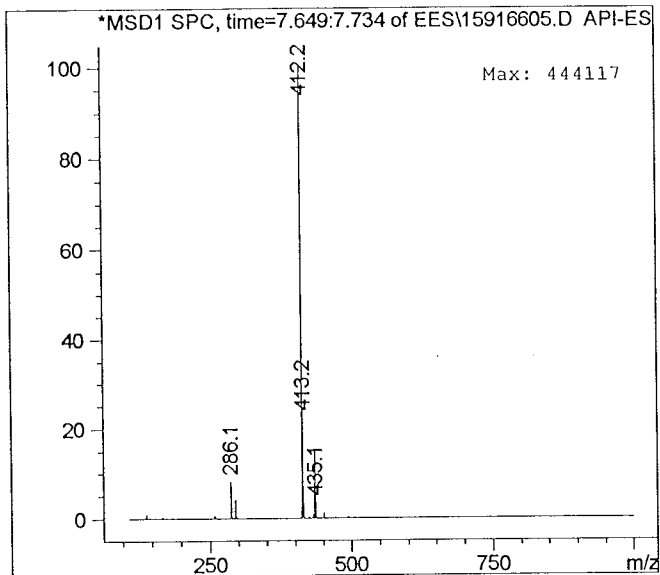
```

ES-pos lcms with ELSD; NH4OAc/MeCN; 110-1000 MW
1 mL/min 5-100% org in 16 min



MS Signal: MSD1 TIC, MS File
Spectra averaged over upper half of peaks.
Noise Cutoff: 1000 counts.
Reportable Ion Abundance: > 25%.
LC Signal: ADC1 A, ELSD
Peak matching window: 0.1 min

Retention Time (LC)	LC Area	Retention Time (MS)	MS Area	Mol. Weight or Ion
7.666	597	7.676	33319232	412.16 I
-	-	8.029	12358534	305.16 I 283.17 I 157.15 I 128.09 I
-	-	10.542	5059912	590.22 I 569.25 I 568.29 I

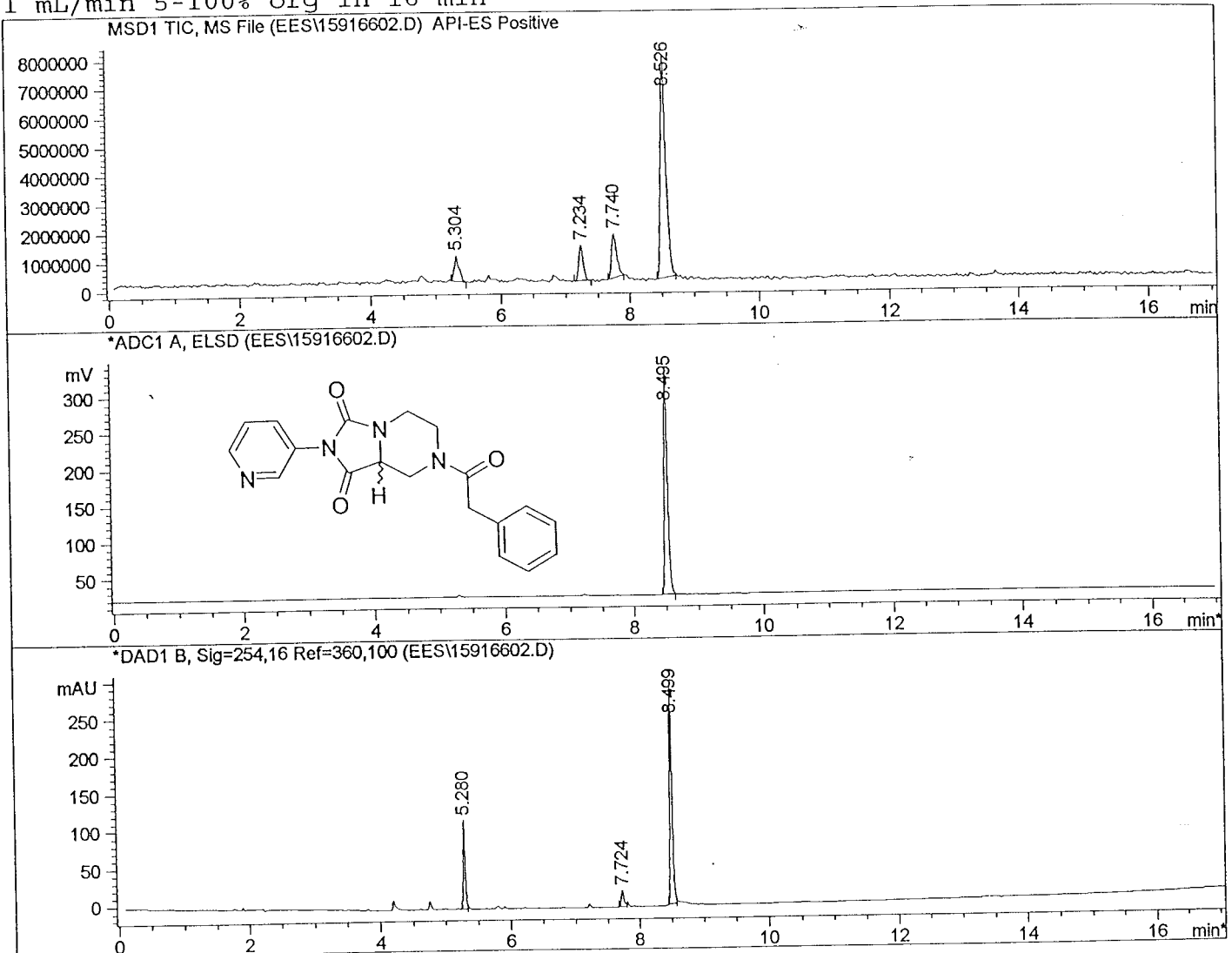


*** End of Report ***

=====
Injection Date : 12/08/1999 6:19:16 PM Seq. Line : 2
Sample Name : 1591-066-2 Vial : 83
Acq. Operator : ees Inj : 1
 Inj Volume : 5 ul

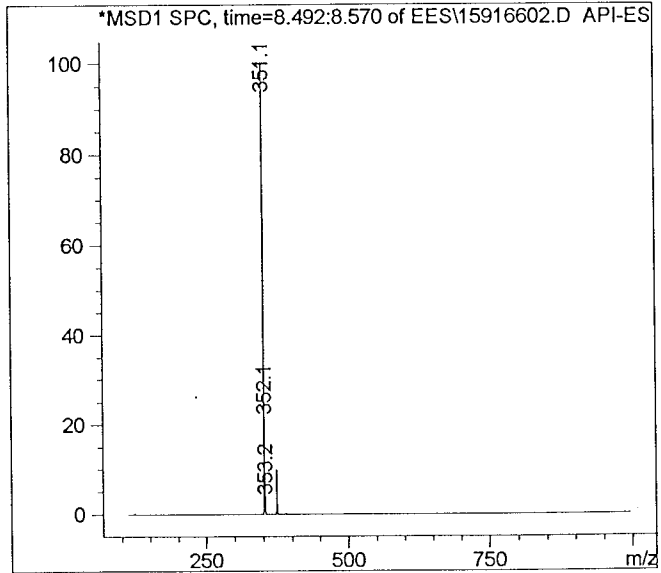
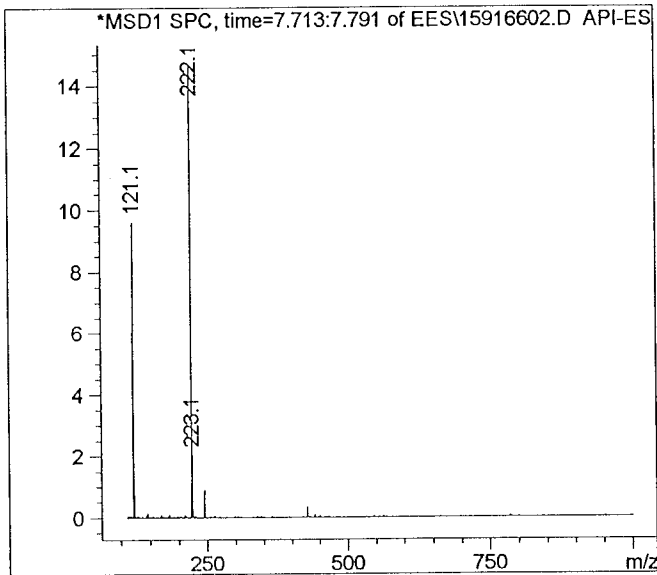
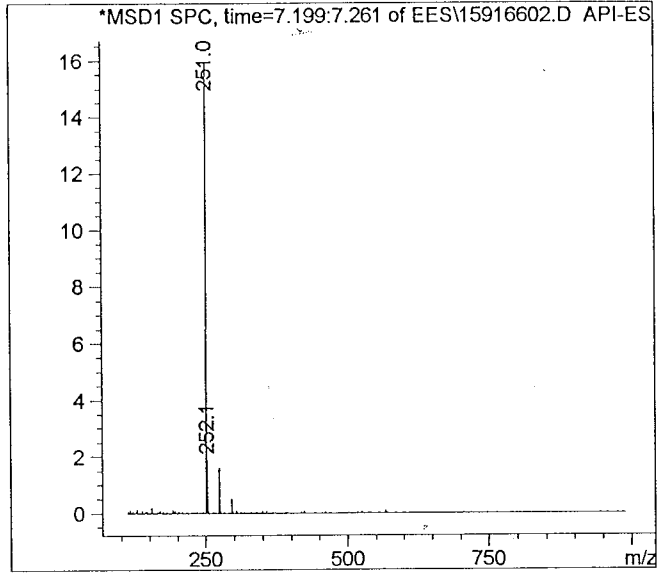
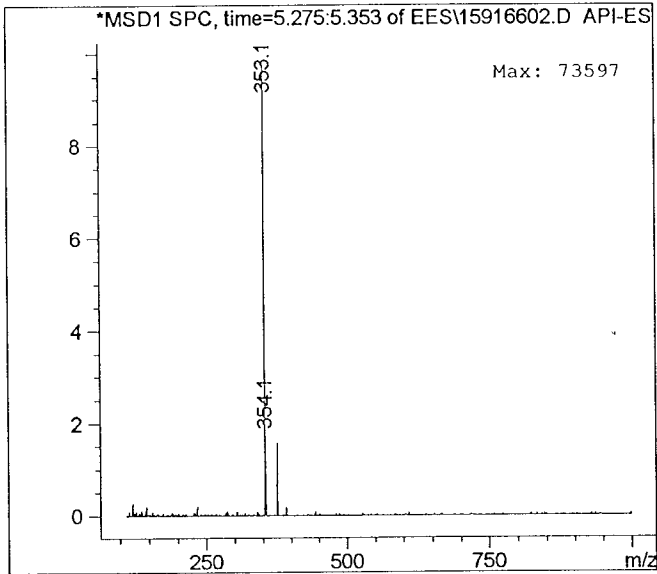
Sequence File : C:\HPCHEM\1\SEQUENCE\1591-066.S
Method : C:\HPCHEM\1\METHODS\ES-LC1.M
Last changed : 12/08/1999 6:17:35 PM by ees
(modified after loading)

ES-pos lcms with ELSD; NH4OAc/MeCN; 110-1000 MW
1 mL/min 5-100% org in 16 min



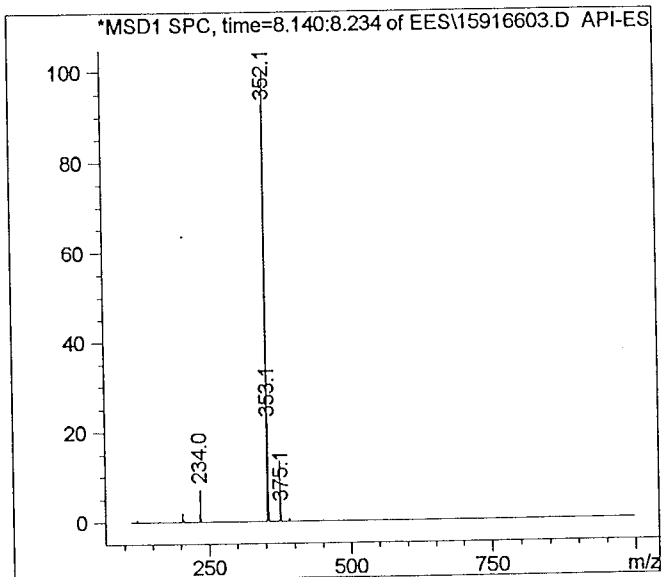
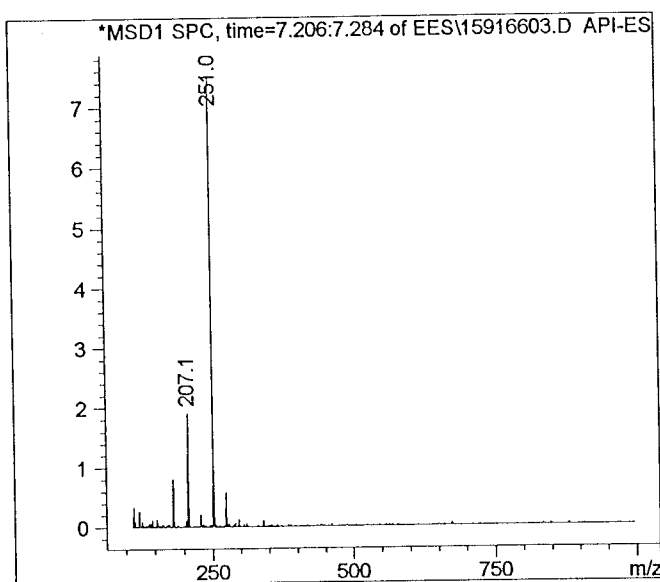
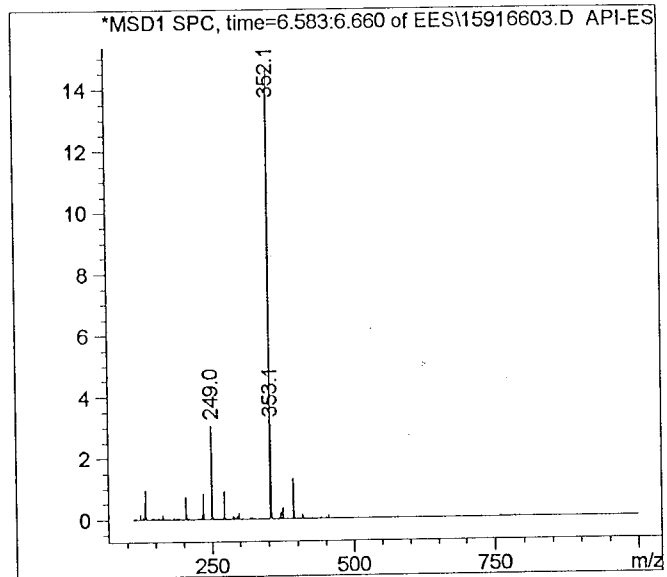
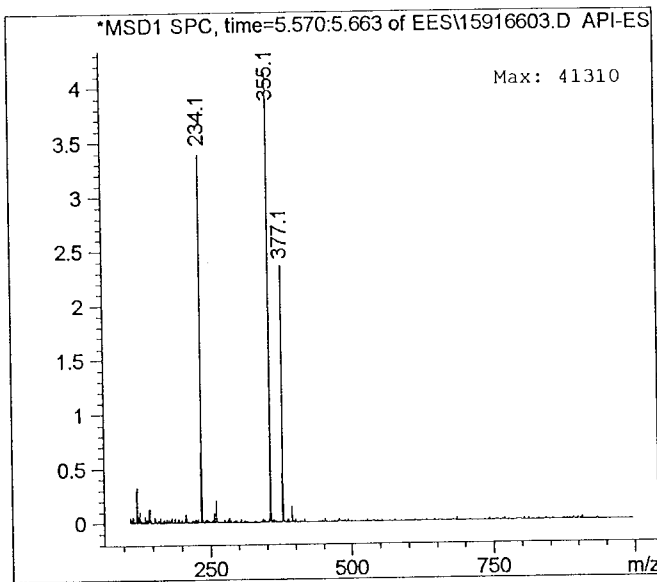
MS Signal: MSD1 TIC, MS File
Spectra averaged over upper half of peaks.
Noise Cutoff: 1000 counts.
Reportable Ion Abundance: > 25%.
LC Signal: ADC1 A, ELSD
Peak matching window: 0.1 min

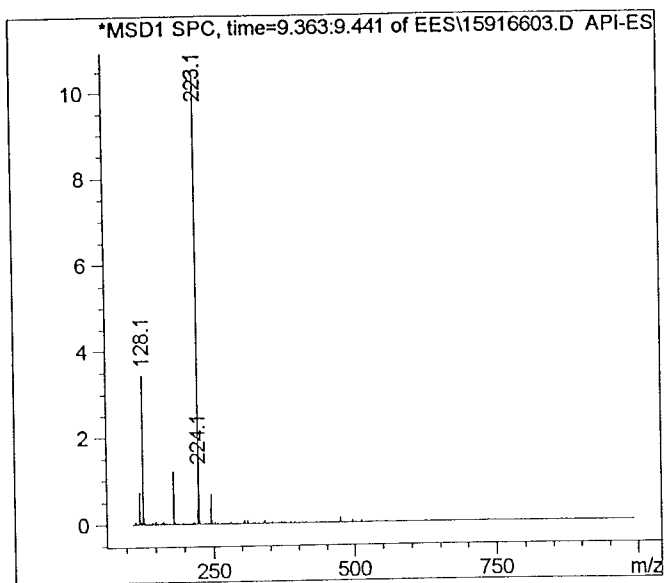
Retention Time (LC)	LC Area	Retention Time (MS)	MS Area	Mol. Weight or Ion
-	-	5.304	4662457	353.13 I
-	-	7.234	5804504	250.99 I
-	-	7.740	8831005	222.12 I 121.08 I
8.495	1113	8.526	45658892	351.13 I



*** End of Report ***

Retention Time (LC)	LC Area	Retention Time (MS)	MS Area	Mol. Weight or Ion
-	-	5.618	5196830	377.05 I 355.11 I 234.08 I
-	-	6.608	11408926	352.13 I
-	-	7.236	5032685	250.99 I 207.07 I
8.153	3649	8.190	72069992	352.14 I
-	-	9.391	7604212	223.13 I 128.11 I





*** End of Report ***

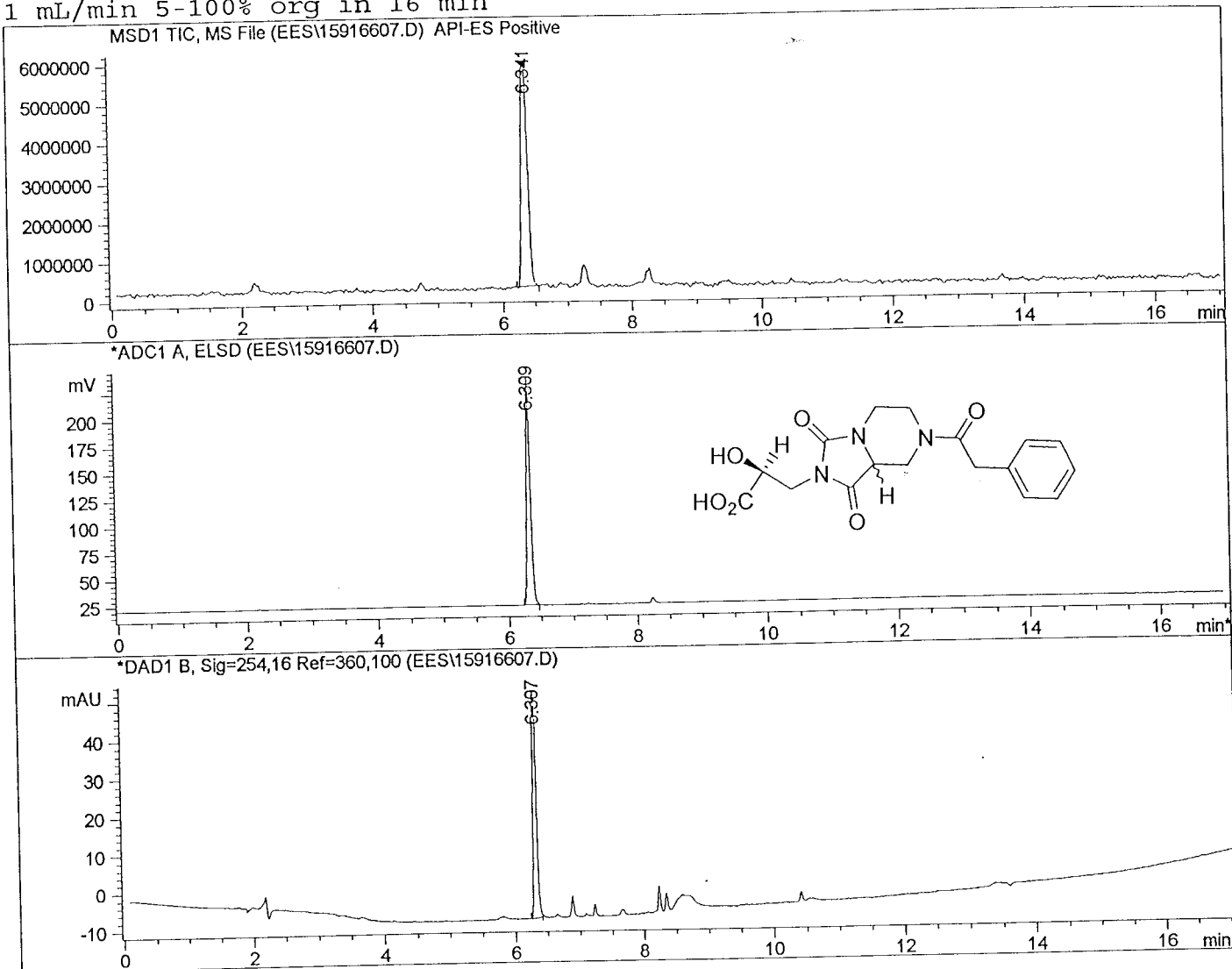
```

=====
Injection Date   : 12/08/1999 8:06:09 PM      Seq. Line   :    7
Sample Name     : 1591-066-7                  Vial        :   88
Acq. Operator   : ees                         Inj         :    1
                                           Inj Volume  : 5 ul
    
```

```

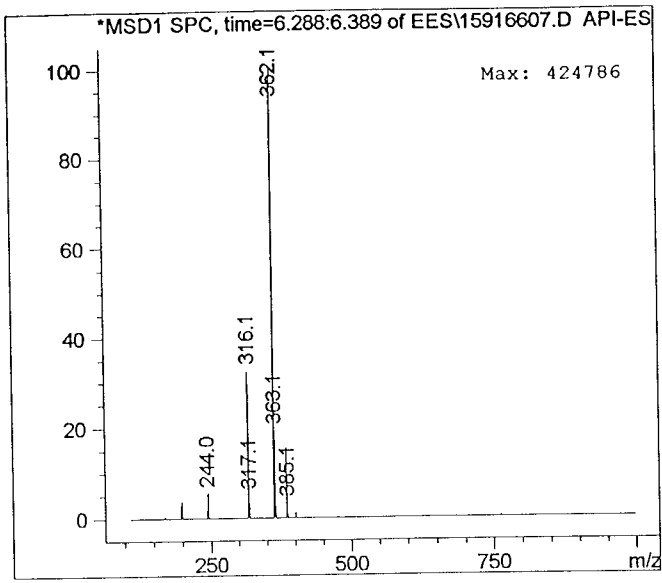
Sequence File   : C:\HPCHEM\1\SEQUENCE\1591-066.S
Method          : C:\HPCHEM\1\METHODS\ES-LC1.M
Last changed    : 12/08/1999 8:04:24 PM by ees
                  (modified after loading)
    
```

ES-pos lcms with ELSD; NH4OAc/MeCN; 110-1000 MW
 1 mL/min 5-100% org in 16 min



MS Signal: MSD1 TIC, MS File
 Spectra averaged over upper half of peaks.
 Noise Cutoff: 1000 counts.
 Reportable Ion Abundance: > 25%.
 LC Signal: ADC1 A, ELSD
 Peak matching window: 0.1 min

Retention Time (LC)	LC Area	Retention Time (MS)	MS Area	Mol. Weight or Ion
6.309	887	6.341	40543476	362.12 I 316.11 I



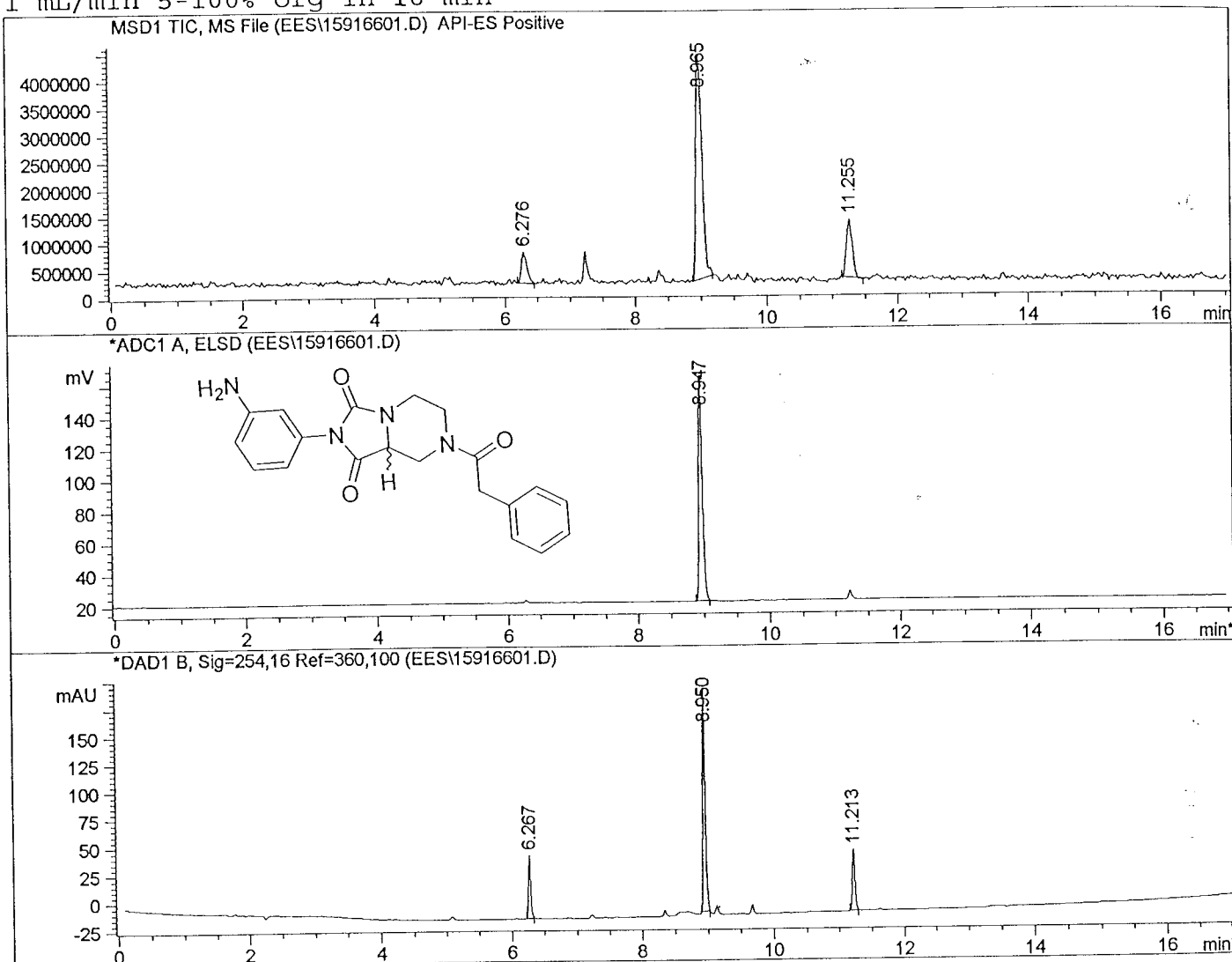
*** End of Report ***

```

=====
Injection Date   : 12/08/1999 5:57:57 PM      Seq. Line   :    1
Sample Name     : 1591-066-1                  Vial        :   82
Acq. Operator   : ees                          Inj         :    1
                                                Inj Volume  : 5 ul

Sequence File   : C:\HPCHEM\1\SEQUENCE\1591-066.S
Method          : C:\HPCHEM\1\METHODS\ES-LC1.M
Last changed    : 12/08/1999 5:55:40 PM by ees
ES-pos lcms with ELSD; NH4OAc/MeCN; 110-1000 MW
1 mL/min 5-100% org in 16 min

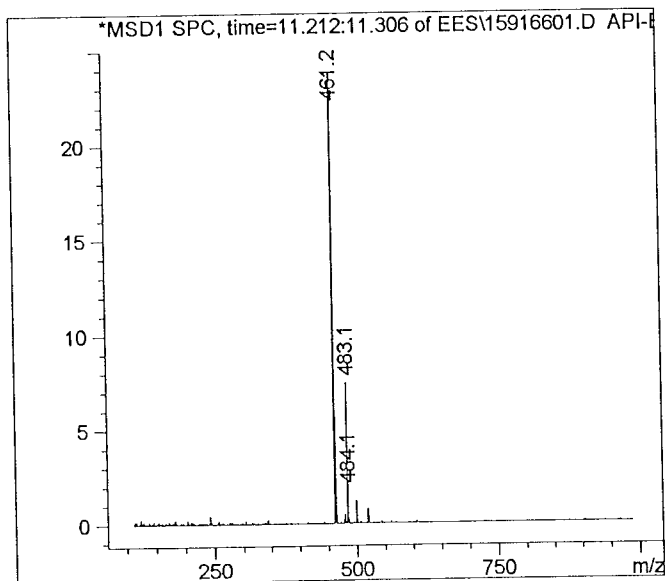
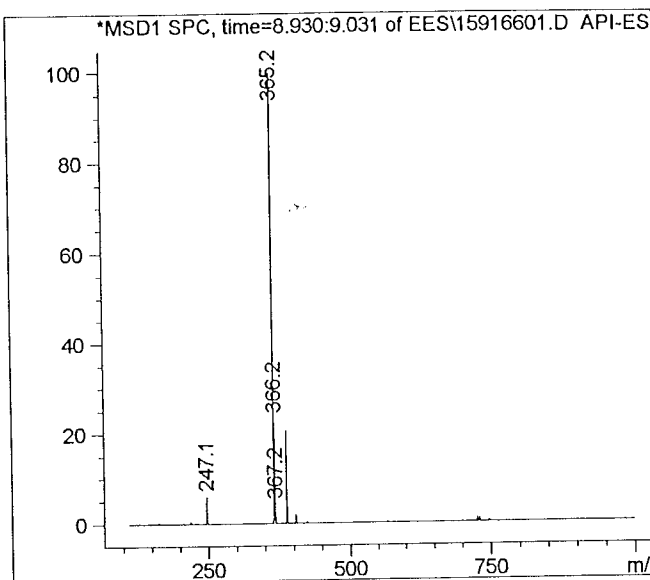
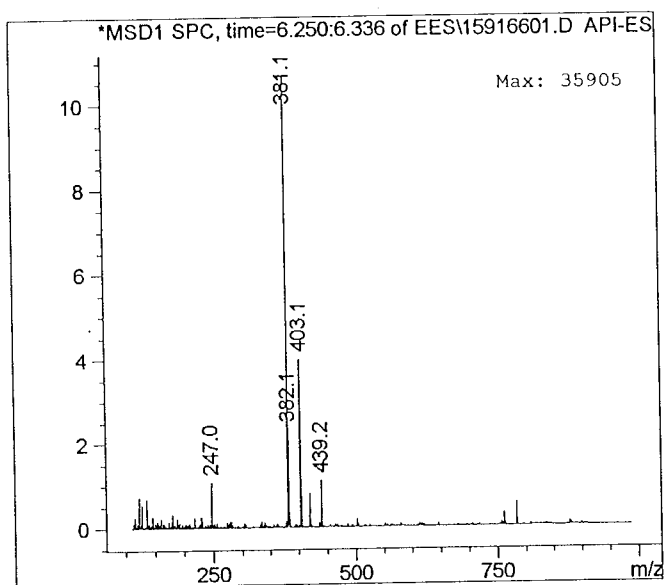
```



MS Signal: MSD1 TIC, MS File
 Spectra averaged over upper half of peaks.
 Noise Cutoff: 1000 counts.
 Reportable Ion Abundance: > 25%.
 LC Signal: ADC1 A, ELSD
 Peak matching window: 0.1 min

Retention Time (LC)	LC Area	Retention Time (MS)	MS Area	Mol. Weight or Ion
-	-	6.276	3519365	403.14 I 381.14 I

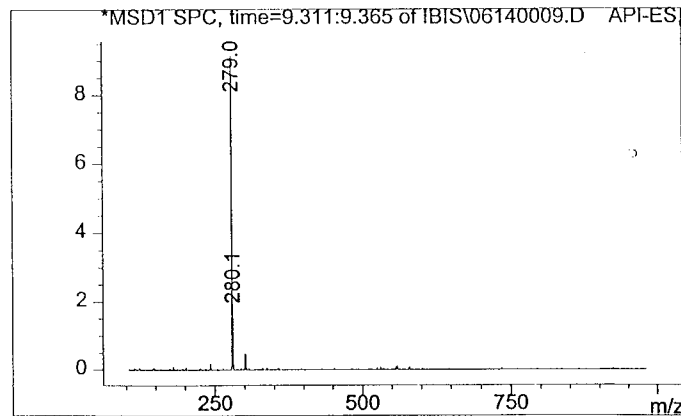
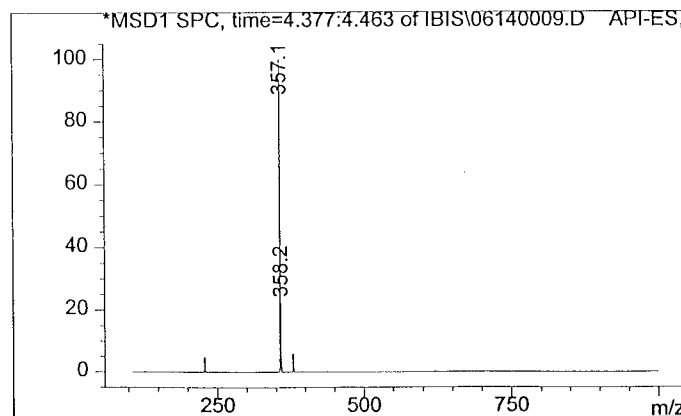
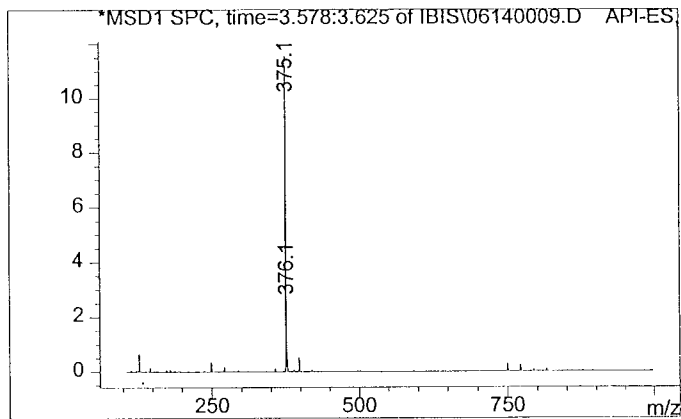
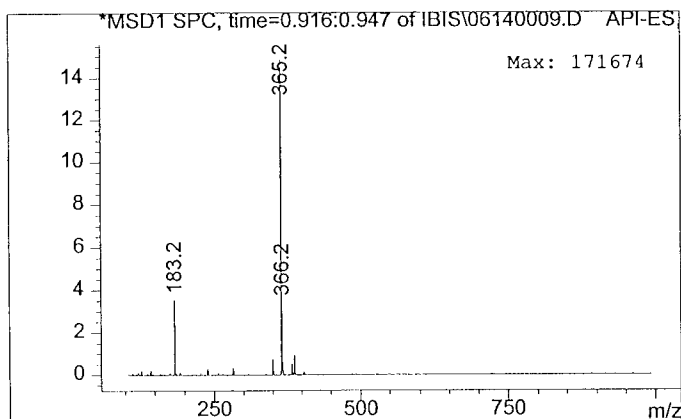
8.947	553	8.965	27282768	365.15 I
-	-	11.255	6612521	483.07 I
				462.13 I
				461.15 I



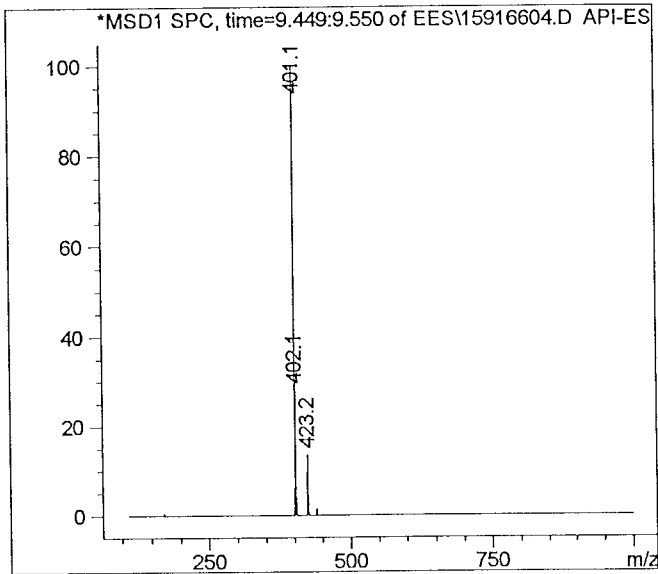
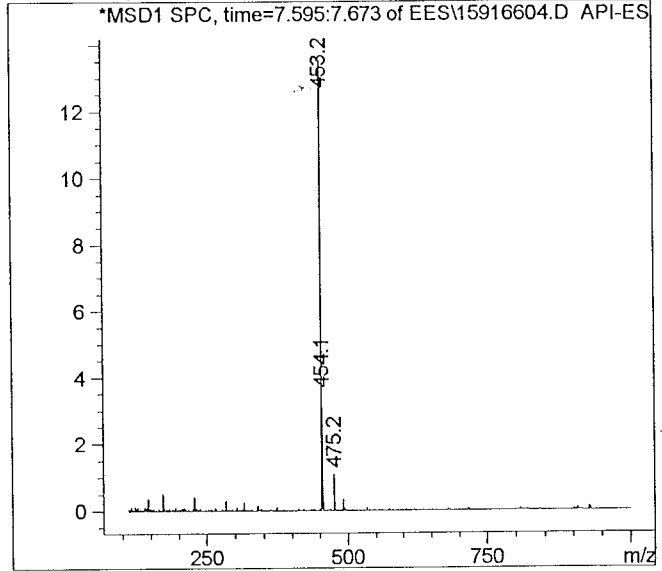
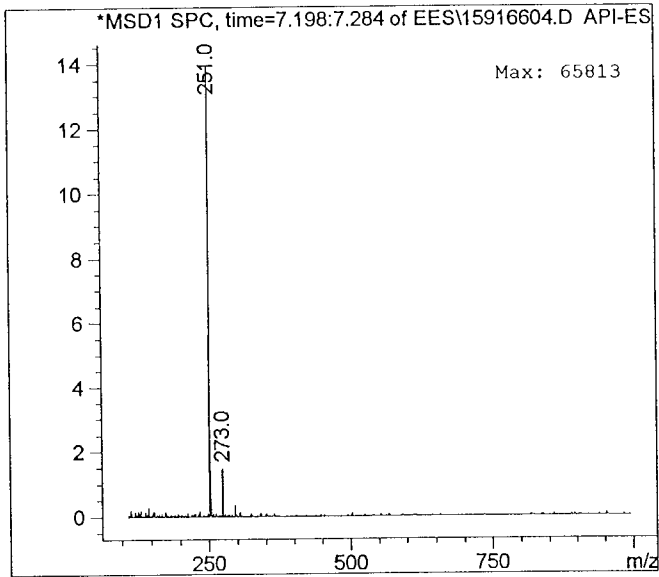
*** End of Report ***

MS Signal: MSD1 TIC, MS File
 Spectra averaged over upper half of peaks.
 Noise Cutoff: 1000 counts.
 Reportable Ion Abundance: > 10%.
 LC Signal: ADC1 A, ELSD
 Peak matching window: 0.1 min

Retention Time (LC)	LC Area	Retention Time (MS)	MS Area	Mol. Weight or Ion
0.931	70	0.930	7613351	366.19 I 365.19 I 183.19 I
-	-	3.595	6106721	376.15 I 375.14 I
4.411	3439	4.408	71617672	358.15 I 357.12 I
-	-	9.335	4616048	280.05 I 279.02 I
16.022	54	-	-	-
16.164	71	-	-	-
16.220	57	-	-	-
16.262	68	-	-	-

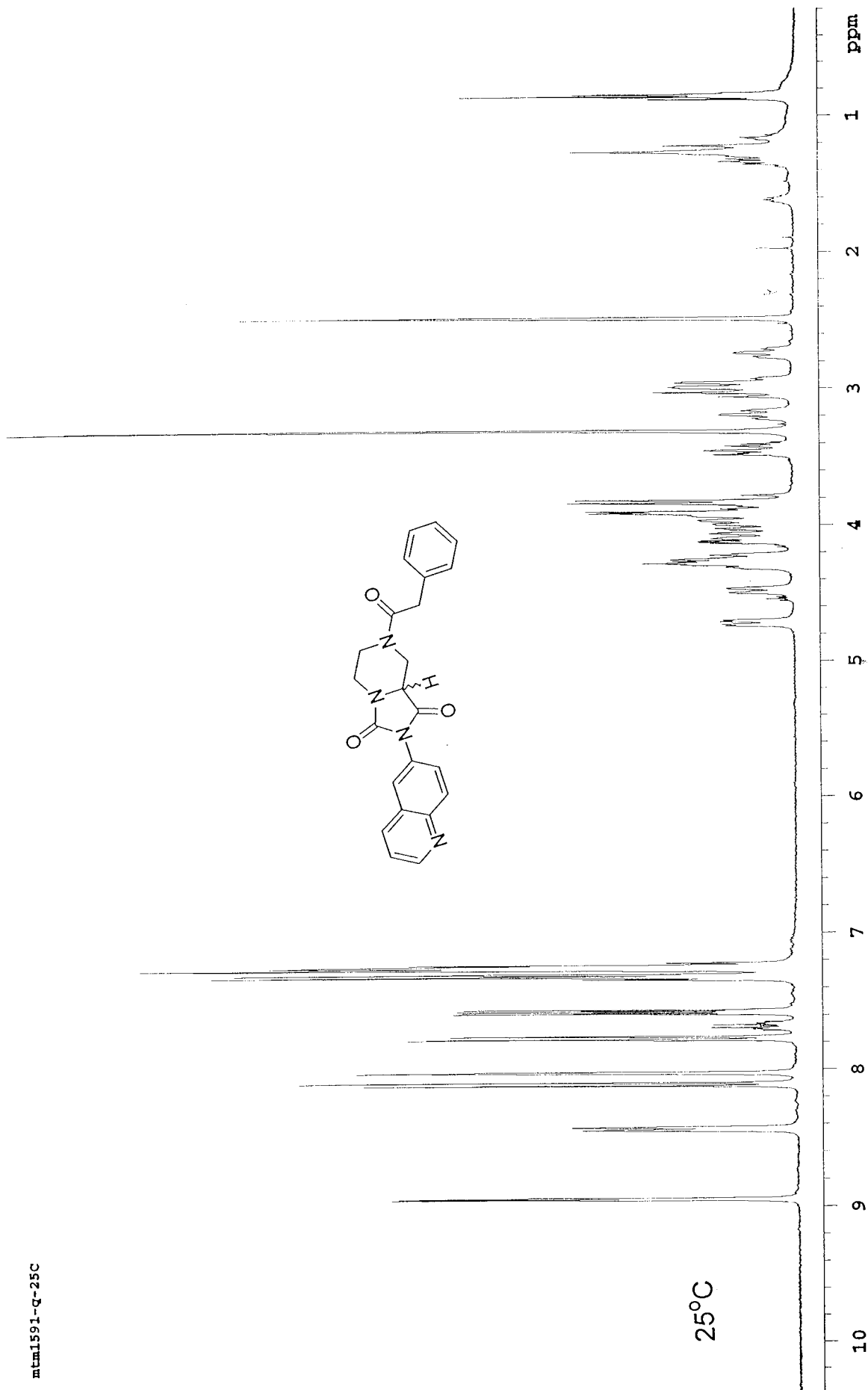


Retention Time (LC)	LC Area	Retention Time (MS)	MS Area	Mol. Weight or Ion
-	-	7.220	3699223	250.99 I
-	-	7.643	3408568	454.14 I 453.15 I
9.462	731	9.484	35098992	402.13 I 401.14 I



*** End of Report ***

mtm1591-q-25C

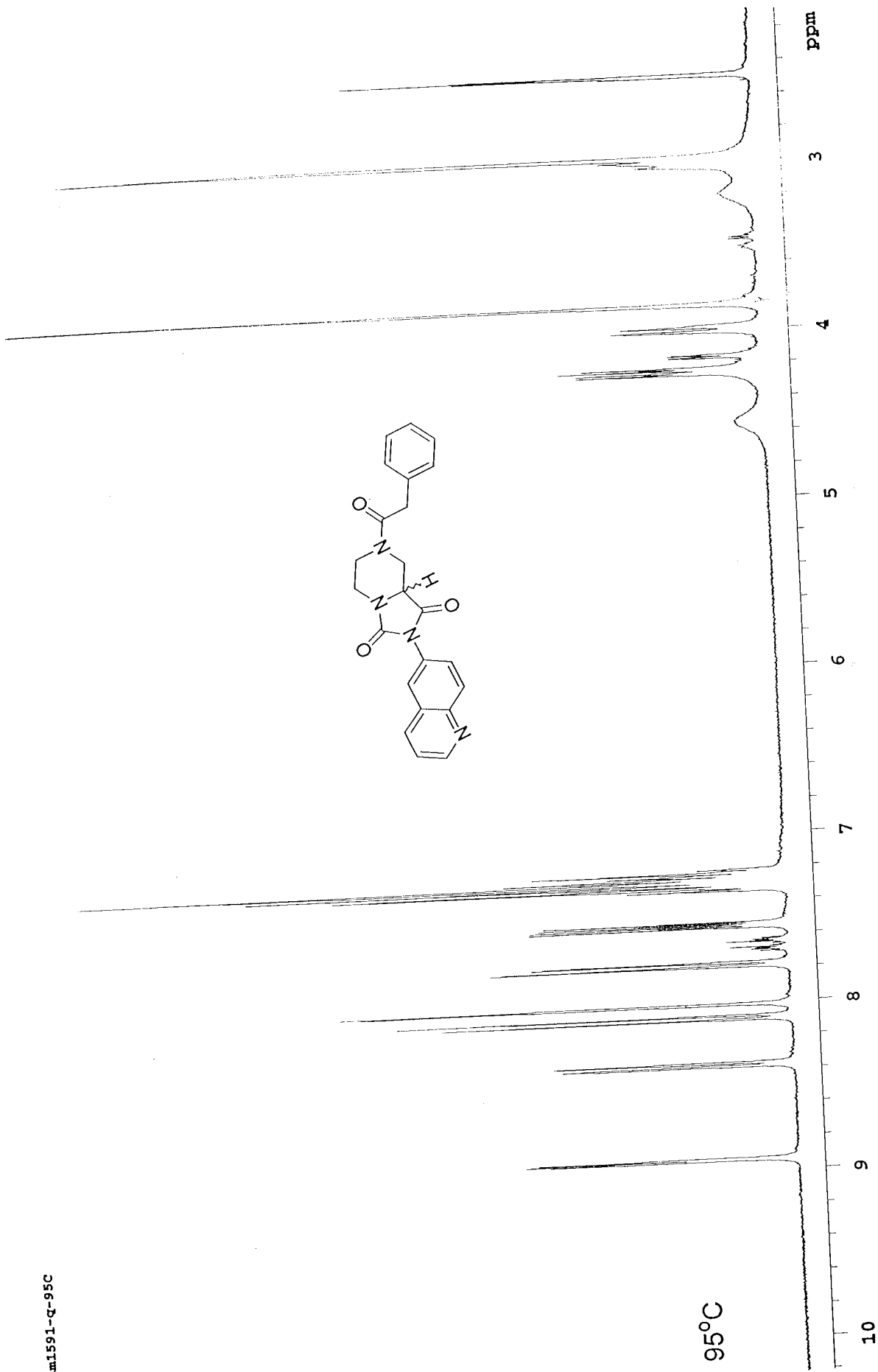


Date run: Jan 4 2000

Spectrometer Frequency: 399.94 MHz

INDEX	FREQUENCY PPM	HEIGHT	INDEX	FREQUENCY PPM	HEIGHT	INDEX	FREQUENCY PPM	HEIGHT	INDEX	FREQUENCY PPM	HEIGHT
1	3580.921	8.954	67.4	44	1687.022	4.218	14.9	87	505.791	1.265	39.3
2	3579.212	8.949	72.8	45	1682.537	4.207	10.9	88	486.570	1.217	22.7
3	3576.649	8.943	71.5	46	1653.065	4.133	14.8	89	462.651	1.157	9.1
4	3575.154	8.939	67.8	47	1649.648	4.125	16.7	90	350.529	0.876	25.4
5	3377.179	8.444	38.3	48	1647.512	4.119	17.0	91	343.268	0.858	59.1
6	3368.850	8.423	40.2	49	1643.882	4.110	16.5	92	337.501	0.844	38.8
7	3246.904	8.119	77.8	50	1638.329	4.096	14.7	93	335.793	0.840	35.0
8	3237.721	8.096	89.2	51	1623.806	4.060	14.9				
9	3208.890	8.023	78.9	52	1608.216	4.021	13.8				
10	3112.358	7.782	69.8	53	1596.043	3.991	14.2				
11	3110.222	7.777	66.4	54	1584.724	3.962	17.0				
12	3103.388	7.760	62.0	55	1571.269	3.929	18.8				
13	3101.253	7.754	59.6	56	1565.503	3.914	36.4				
14	3081.177	7.704	7.7	57	1560.164	3.901	37.0				
15	3078.401	7.697	7.6	58	1550.767	3.878	12.8				
16	3075.625	7.690	15.1	59	1543.933	3.860	9.9				
17	3070.926	7.679	6.3	60	1535.177	3.839	40.2				
18	3067.296	7.669	14.7	61	1526.634	3.817	38.8				
19	3064.306	7.662	6.9	62	1511.044	3.778	9.1				
20	3061.529	7.655	7.0	63	1392.088	3.481	14.1				
21	3036.542	7.593	61.5	64	1387.389	3.469	9.7				
22	3032.271	7.582	59.9	65	1380.555	3.452	15.9				
23	3028.213	7.572	60.8	66	1366.460	3.417	12.0				
24	3023.942	7.561	59.7	67	1360.907	3.403	9.1				
25	2936.166	7.342	38.2	68	1323.320	3.309	478.8				
26	2928.692	7.323	104.9	69	1286.373	3.216	7.1				
27	2921.430	7.305	100.9	70	1275.908	3.190	13.1				
28	2906.694	7.268	117.9	71	1263.735	3.160	9.0				
29	2900.928	7.253	94.5	72	1222.944	3.058	13.2				
30	2893.880	7.236	69.5	73	1210.984	3.028	24.8				
31	2886.619	7.218	23.2	74	1195.608	2.989	22.2				
32	1895.248	4.739	12.1	75	1182.367	2.956	20.9				
33	1891.190	4.729	12.7	76	1170.193	2.926	7.3				
34	1882.861	4.708	13.0	77	1105.056	2.763	6.9				
35	1878.163	4.696	12.5	78	1095.873	2.740	10.6				
36	1797.008	4.493	11.4	79	995.283	2.489	75.7				
37	1784.621	4.462	11.9	80	993.575	2.484	99.0				
38	1722.687	4.307	12.0	81	991.866	2.480	71.5				
39	1716.280	4.291	20.0	82	788.552	1.972	6.2				
40	1711.795	4.280	27.0	83	541.670	1.354	8.5				
41	1705.602	4.265	21.6	84	533.768	1.335	12.9				
42	1700.476	4.252	21.9	85	526.293	1.316	11.5				
43	1693.429	4.234	12.5	86	518.178	1.296	11.8				

mtm1591-Q-95C



Date run: Jan 4 2000

Spectrometer Frequency: 399.94 MHz

mm1591-q-95C

INDEX	FREQUENCY	PPM	HEIGHT	INDEX	FREQUENCY	PPM	HEIGHT
1	3576.863	8.944	45.2	44	1593.694	3.985	25.6
2	3575.154	8.939	49.5	45	1540.089	3.851	177.0
3	3572.592	8.933	48.6	46	1276.763	3.192	6.8
4	3570.883	8.929	47.2	47	1211.198	3.028	21.6
5	3352.833	8.383	42.3	48	1198.598	2.997	28.4
6	3344.504	8.363	43.9	49	1190.696	2.977	126.5
7	3242.206	8.107	63.4	50	996.778	2.492	27.6
8	3233.236	8.084	71.6	51	994.856	2.488	53.7
9	3207.181	8.019	78.1	52	993.148	2.483	74.0
10	3205.045	8.014	81.8	53	991.225	2.478	54.3*
11	3117.270	7.794	54.4	54	989.303	2.474	28.0
12	3114.921	7.789	52.4				
13	3108.300	7.772	47.0				
14	3105.951	7.766	45.0				
15	3077.547	7.695	6.8				
16	3074.984	7.689	6.2				
17	3071.781	7.681	10.8				
18	3058.967	7.649	11.3				
19	3055.336	7.640	6.1				
20	3053.414	7.635	6.6				
21	3024.369	7.562	47.2				
22	3020.311	7.552	46.9				
23	3016.040	7.541	45.4				
24	3011.982	7.531	44.5				
25	2936.380	7.342	29.1				
26	2929.119	7.324	82.2				
27	2923.993	7.311	30.4				
28	2921.430	7.305	98.3				
29	2914.169	7.287	128.8				
30	2907.549	7.270	51.4				
31	2902.210	7.257	27.5				
32	2900.715	7.253	32.6				
33	2893.667	7.235	46.2				
34	2886.833	7.218	16.1				
35	1705.388	4.264	34.0				
36	1700.690	4.252	34.0				
37	1694.497	4.237	37.3				
38	1689.798	4.225	33.0				
39	1667.160	4.169	17.0				
40	1665.238	4.164	17.1				
41	1661.608	4.155	17.2				
42	1659.258	4.149	16.5				
43	1603.945	4.010	27.3				